



[www.hualuopumps.com](http://www.hualuopumps.com)

- 23 Years Experience.
- 13680m<sup>2</sup> Area Covered.
- 130+ Number of Employees.
- 20+ Honorary Certificates.

## CONTACT INFO

**E-MAIL:**  
[info@hualuopumps.com](mailto:info@hualuopumps.com)

**TEL/WHATSAPP/WECHAT:**  
0086 187 8327 6017

**ADDRESS:**  
No. 399 Antai Street,  
Economic Development  
Zone, Neijiang City, Sichuan  
Province, China

# HUALUO PUMP

## SUBMERSIBLE PUMP



[WWW.HUALUOPUMPS.COM](http://WWW.HUALUOPUMPS.COM)

# WHY CHOOSE US?

Every improvement we make is for you to experience a more comfortable product.

我们做出的每一个改进都只为您体验更舒适的产品。

100% 品质保证  
QUALITY ASSURANCE

24X7 小时全天候服务  
SERVICE

畅销 30+ 多个国家和地区  
SELLING



EFFICIENT  
高效



ENERGY CONSERVATION  
节能



GREEN  
环保



DURABLE  
耐用



SAFETY  
安全

## FIELDS OF APPLICATION



RICE FIELDS  
农田灌溉



PLANT WATER  
工厂用水



LANDSCAPE  
园林景观



MUNICIPAL ENGINEERING  
市政工程

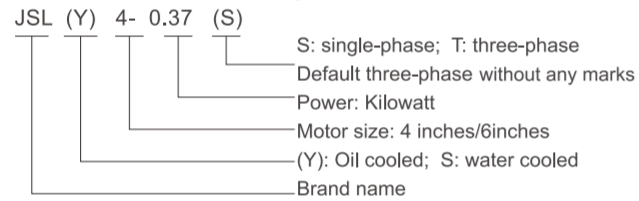


## 产品目录

## PRODUCT CATALOG

电机说明 MOTOR INTRODUCTION	01
4SP不锈钢喷泉泵 STAINLESS STEEL FOUNTAIN PUMP	03
6SP不锈钢喷泉泵 STAINLESS STEEL FOUNTAIN PUMP	09
8/10SP不锈钢喷泉泵 STAINLESS STEEL FOUNTAIN PUMP	14
电缆尺寸 CABLE SIZE	21
水头损失表 HEAD LOSS TABLE	23
DP低压直流喷泉泵 LOW PRESSURE DC FOUNTAIN PUMP	24

型号说明/Model description



(All are asynchronous submersible operation motors, national mark YQS.)

使用条件/Conditions of Use

- 1、 the water temperature is not higher than 35 C
- 2、 the PH of the water source is between 6.5 and 8.0;
- 3、 the solid content (weight ratio) in the water source ≤ 0.01%, the maximum particle diameter ≤ 0.2mm;
- 4、 Maximum diving depth ≤ 150m

电机性能参数/Motor performance parameters

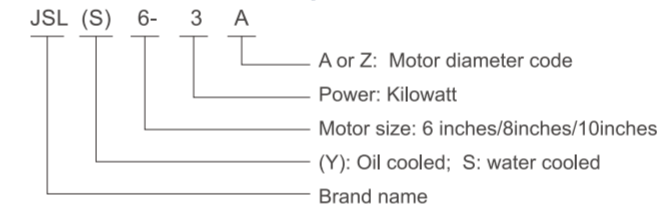
4"油冷式潜水电机/Oil-cooled submersible motor

No.	Item No.	Power		Voltage V	Current A	Power factor COSφ	Rotate speed rpm	Length mm	Net Weight kgs
		kW	HP						
1	JSL(Y)4-0.37(S)	0.37	0.5	220	3.2	0.93	2850	395	8
2	JSL(Y)4-0.55(S)	0.55	0.75	220	4.2	0.93	2850	410	8.9
3	JSL(Y)4-0.75(S)	0.75	1	220	5.7	0.93	2850	430	9.6
4	JSL(Y)4-1.1(S)	1.1	1.5	220	7.8	0.93	2850	455	11.2
5	JSL(Y)4-1.5(S)	1.5	2	220	10.6	0.93	2850	470	13.3
6	JSL(Y)4-2.2(S)	2.2	3	220	14.2	0.93	2850	525	16.3
7	JSL(Y)4-0.55(T)	0.55	0.75	380	1.6	0.7	2850	383	89
8	JSL(Y)4-0.75(T)	0.75	1	380	2.5	0.72	2850	408	9.6
9	JSL(Y)4-1.1(T)	1.1	1.5	380	3.2	0.73	2850	428	10.8
10	JSL(Y)4-1.5(T)	1.5	2	380	4.2	0.74	2850	468	11.9
11	JSL(Y)4-2.2(T)	2.2	3	380	5.8	0.75	2850	524	14
12	JSL(Y)4-3.00(T)	3	4	380	7.3	0.75	2850	582	18.8
13	JSL(Y)4-4.0(T)	4	5.5	380	9.3	0.76	2850	647	21.8
14	JSL(Y)4-5.5(T)	5.5	7.5	380	13.0	0.76	2850	747	26.8
15	JSL(Y)4-7.5(T)	7.5	10	380	18.0	0.76	2850	882	33.7

6"油冷式潜水电机/Oil-cooled submersible motor

No.	Item No.	Power		Voltage V	Current A	Power factor COSφ	Rotate speed rpm	Length mm	Net Weight kgs
		kW	HP						
1	JSL(Y)6-4.0	4	5.5	380	9.2	0.8	2860	608	31
2	JSL(Y)6-5.5	5.5	7.5	380	129	0.83	2860	658	34.5
3	JSL(Y)6-7.5	7.5	10	380	16.5	0.83	2860	708	39.2
4	JSL(Y)6-9.2	9.2	12.5	380	19.5	0.85	2860	783	46.5
5	JSL(Y)6-11	11	15	380	23	0.85	2870	833	51.3
6	JSL(Y)6-13	13	18	380	26.3	0.86	2870	883	56.4
7	JSL(Y)6-15	15	20	380	31	0.86	2870	933	61.5

型号说明/Model description



(All are asynchronous submersible operation motors, national mark YQS.)

6"水冷式潜水电机/Water cooled submersible motor

No.	Item No.	Power		Voltage V	Current A	Power factor COSφ	Rotte speed rpm	Dimeter mm	Length mm	Net Weight kgs
		kW	HP							
1	JSL (S) 6-3A	3	4	380	7.8	0.78	2850	140	781	52.5
2	JSL (S) 6-4A	4	5.5	380	10.1	0.79	2850	140	791	53.5
3	JSL (S) 6-5.5A	5.5	7.5	380	13.7	0.8	2850	140	821	56.5
4	JSL (S) 6-7.5A	7.5	10	380	18.5	0.8	2850	140	881	62.5
5	JSL (S) 6-9.2A	9.2	12.5	380	22.1	0.81	2850	140	921	67
6	JSL (S) 6-11A	11	15	380	26.3	0.81	2850	140	1001	74
7	JSL (S) 6-13A	13	18	380	30.7	0.81	2850	140	1041	77
8	JSL (S) 6-15Z	15	20	380	35	0.81	2850	145	1114	80
9	JSL (S) 6-18.5Z	18.5	25	380	42.6	0.82	2850	145	1184	86
10	JSL (S) 6-22Z	22	30	380	50.3	0.82	2850	145	1269	88
11	JSL (S) 6-25Z	25	34	380	57.2	0.82	2850	145	1364	92
12	JSL (S) 6-30Z	30	40	380	67.4	0.83	2850	145	1454	101
13	JSL (S) 6-37Z	37	50	380	83.1	0.83	2850	145	1614	119

8"水冷式潜水电机/Water cooled submersible motor

No.	Item No.	Power		Voltage V	Current A	Power factor COSφ	Rotte speed rpm	Dimeter mm	Length mm	Net Weight kgs
		kW	HP							
1	JSL (S) 8-22A	22	30	380	48.5	0.83	2850	183	1122	124.5
2	JSL (S) 8-25A	25	34	380	54.5	0.83	2850	183	1192	131.5
3	JSL (S) 8-30A	30	40	380	65.4	0.83	2850	183	1257	145.5
4	JSL (S) 8-37A	37	50	380	78.7	0.84	2850	183	1337	163
5	JSL (S) 8-45A	45	60	380	95.8	0.84	2850	183	1452	202
6	JSL (S) 8-55A	55	75	380	116.4	0.84	2850	183	1612	217
7	JSL (S) 8-63Z	63	85	380	133.3	0.84	2850	193	1805	283
8	JSL (S) 8-75Z	75	100	380	156.8	0.85	2850	193	1905	304
9	JSL (S) 8-90Z	90	125	380	187.1	0.85	2850	193	1995	323
10	JSL (S) 8-110Z	110	150	380	228.6	0.85	2850	193	2115	349

10"水冷式潜水电机/Water cooled submersible motor

No.	Item No.	Power		Voltage V	Current A	Power factor COSφ	Rotte speed rpm	Dimeter mm	Length mm	Net Weight kgs
		kW	HP							
1	JSL (S) 10-18.5A	18.5	25	380	41	0.83	2875	222	1062	96
2	JSL (S) 10-22A	22	30	380	47.4	0.84	2875	222	1082	149
3	JSL (S) 10-25A	25	34	380	53.5	0.84	2875	222	1102	155
4	JSL (S) 10-30A	30	40	380	63.8	0.84	2875	222	1137	164
5	JSL (S) 10-37A	37	50	380	77.8	0.84	2875	222	1177	174
6	JSL (S) 10-45A	45	60	380	93.5	0.85	2875	222	1242	193
7	JSL (S) 10-55A	55	75	380	114.3	0.85	2875	222	1317	211
8	JSL (S) 10-63Z	63	85	380	129.4	0.85	2875	224	1588	280
9	JSL (S) 10-75Z	75	100	380	154.1	0.85	2875	224	1738	319
10	JSL (S) 10-90Z	90	125	380	182.8	0.86	2875	224	1858	347
11	JSL (S) 10-110Z	110	150	380	222.1	0.86	2875	224	2048	400

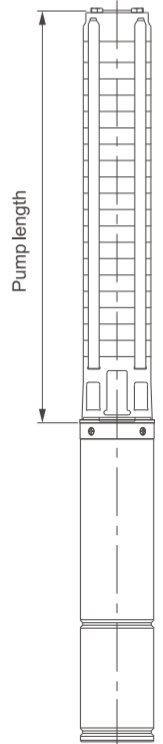
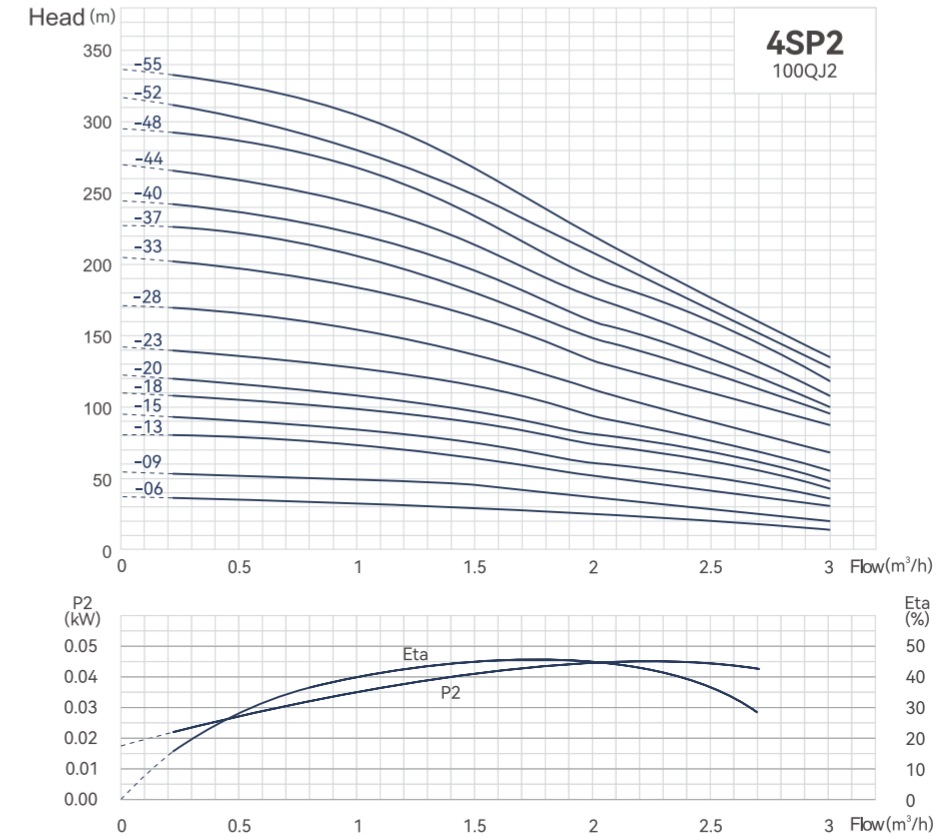
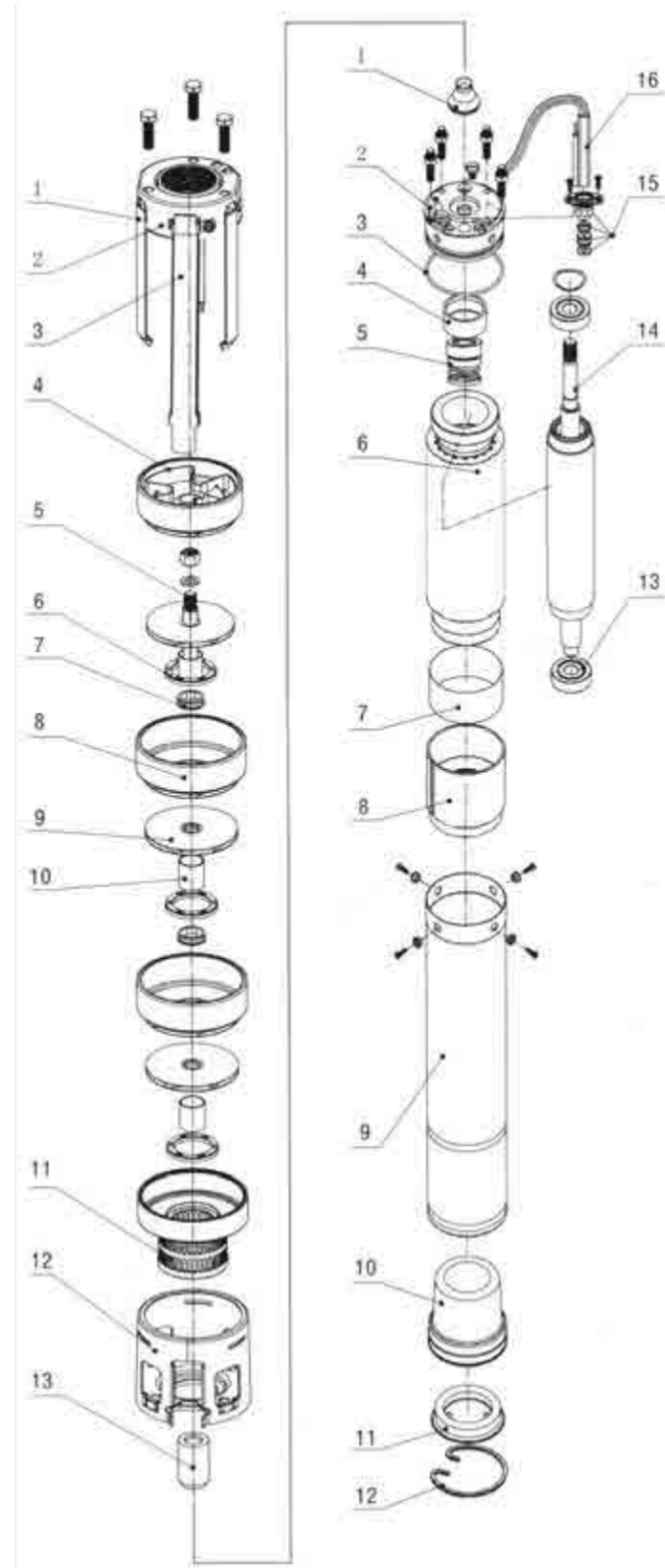
泵体结构说明/Description of pump structure

No.	Name of parts	Material
1	Puller strap	① SS304 ② SS316
2	Water exit interval	① SS304 ② SS316
3	Covered Cables	① SS304 ② SS316
4	Valve	① SS304 ② SS316
5	Rotary shaft	① SS304 ② 2Cr13
6	O ring	Rubber
7	Bearing	Rubber
8	Guide vane	① SS304 ② SS316
9	Impeller	① SS304 ② SS316
10	Shaft sleeve	① SS304 ② SS316
11	Strainer	① SS304 ② SS316
12	Inlet segment	① SS304 ② SS316
13	Coupling	① SS304 ② SS316

电机结构说明/Motor structure description

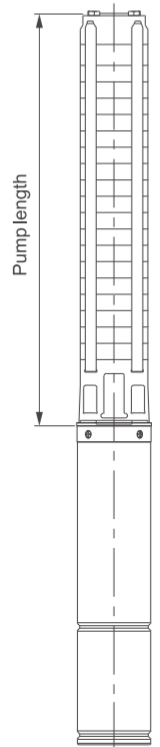
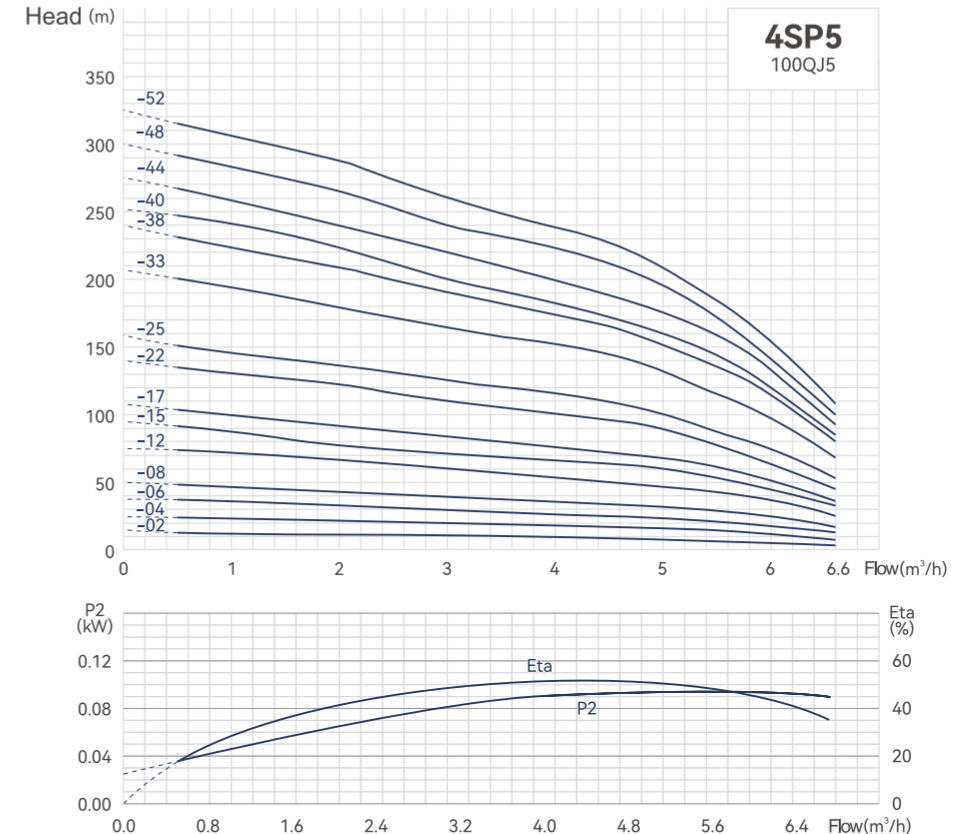
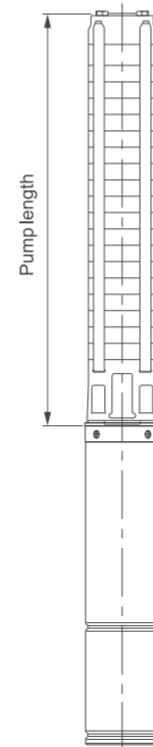
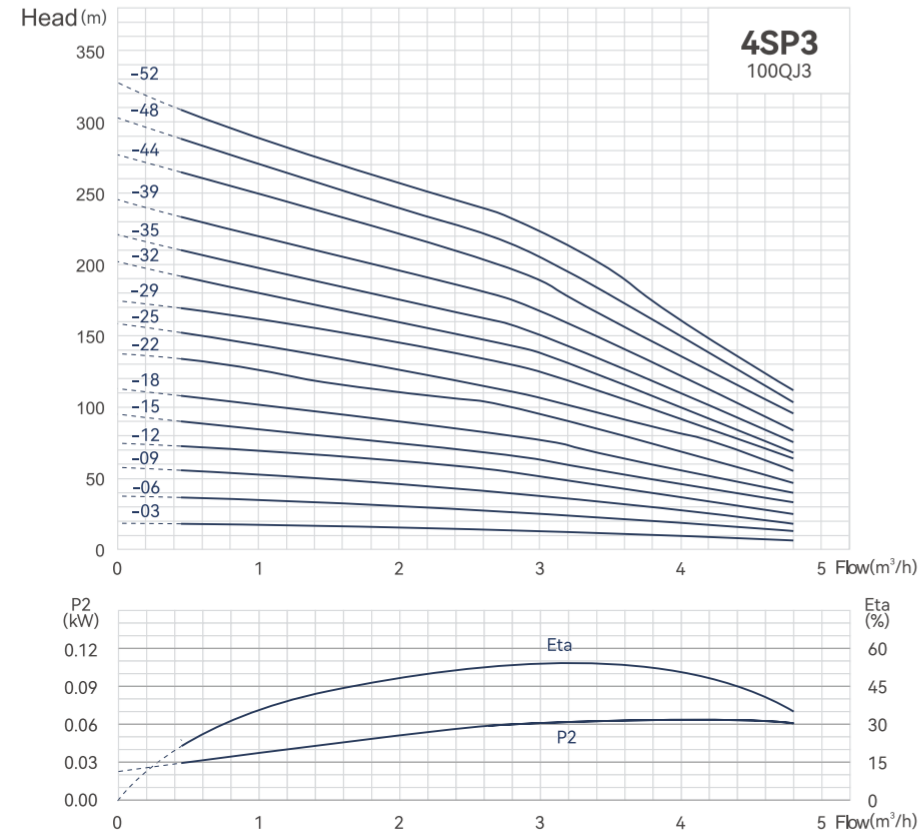
No.	Name of parts	Material
1	Slinger(Sand guard)	Rubber
2	Motor end cap	① Cast copper HPb59-1 ② SS304
3	O ring	Rubber
4	Insulation sleeve	Nylon
5	Mechanical seal	SiC-ceramic
6	Stator	Cold rolled silicon steel sheet
7	Insulation sleeve	PET film
8	Lower bearing body	Cast aluminium 6061
9	Stator shell	① SS304 ② SS316
10	Membrane	Rubber
11	Membrane body	① SS304 ② SS316
12	Snap ring	SS304
13	Bearing	① NSK ② Human™ bearing
14	Shaft	SS304-carbon steel
15	Cabel seal	Rubber
16	Cable	Insulating material-copper

Cooling oil for food grade machinery special oil



性能参数/Performance parameters

Model number	Motor		m³/h	Flow(n=2850r/min)							Pump length (mm)	Pump weight (kg)	Outlet diameter
	KW	HP		0	0.5	1	1.5	2	2.5	3			
4SP2-6	0.37	0.5	Head (m)	37	35	34	30	24	20	15	277	2.5	DN32/DN40 1-1/4" 1-1/2"
4SP2-9	0.37	0.5		55	51	48	45	36	30	20	340	3.1	
4SP2-13	0.55	0.75		80	76	72	64	52	44	31	424	4.	
4SP2-15	0.75	1		96	92	83	74	60	53	36	466	4.5	
4SP2-18	0.75	1		110	106	99	89	73	66	43	529	5.1	
4SP2-20	1.1	1.5		122	116	108	99	81	71	48	571	5.5	
4SP2-23	1.1	1.5		141	134	127	114	92	80	56	634	6.2	
4SP2-28	1.5	2		171	162	158	139	112	94	68	739	7.3	
4SP2-33	1.5	2		202	195	187	163	132	111	87	876	8.4	
4SP2-37	2.2	3		227	220	209	183	148	125	94	960	9.2	
4SP2-40	2.2	3		245	238	225	198	160	135	99	1023	9.9	
4SP2-44	2.2	3		270	258	247	215	176	148	109	1107	10.8	
4SP2-48	2.2	3		294	278	270	237	192	161	119	1191	11.7	
4SP2-52	3	4		318	302	292	257	208	175	128	1275	12.6	
4SP2-55	3	4		336	320	308	272	220	185	135	1338	13.2	



性能参数/Performance parameters

Model number	Motor		m³/h	Flow(n≈2850r/min)							Pump length (mm)	Pump weight (kg)	Outlet diameter
	KW	HP		0	1.2	2	3	3.6	4	4.8			
4SP3-03	0.37	0.5	Head (m)	19	16	15	13	11	10	7	214	1.8	DN32/DN40 1-1/4" 1-1/2"
4SP3-06	0.37	0.5		38	33	30	26	21	19	13	277	2.5	
4SP3-09	0.55	0.75		57	50	45	38	31	28	19	340	3.1	
4SP3-12	0.75	1		76	68	60	51	42	37	26	403	3.8	
4SP3-15	1.1	1.5		95	82	74	64	53	46	32	466	4.5	
4SP3-18	1.1	1.5		113	98	89	77	63	56	39	529	5.1	
4SP3-22	1.5	2		139	122	109	94	78	68	47	613	6.0	
4SP3-25	1.5	2		158	140	124	107	90	78	54	676	6.6	
4SP3-29	2.2	3		173	160	144	124	104	90	62	760	7.5	
4SP3-32	2.2	3		202	175	158	137	114	99	68	823	8.1	
4SP3-35	3	4		220	191	173	150	126	109	74	918	8.8	
4SP3-39	3	4		246	213	193	167	139	121	83	1002	9.7	
4SP3-44	3	4		277	242	218	188	154	136	94	1107	10.8	
4SP3-48	4	5.5		302	262	238	205	172	149	102	1191	11.7	
4SP3-52	4	5.5		328	282	257	222	189	161	111	1275	12.6	

性能参数/Performance parameters

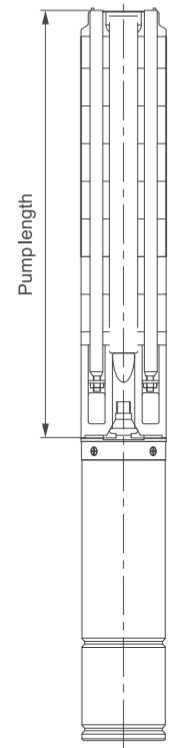
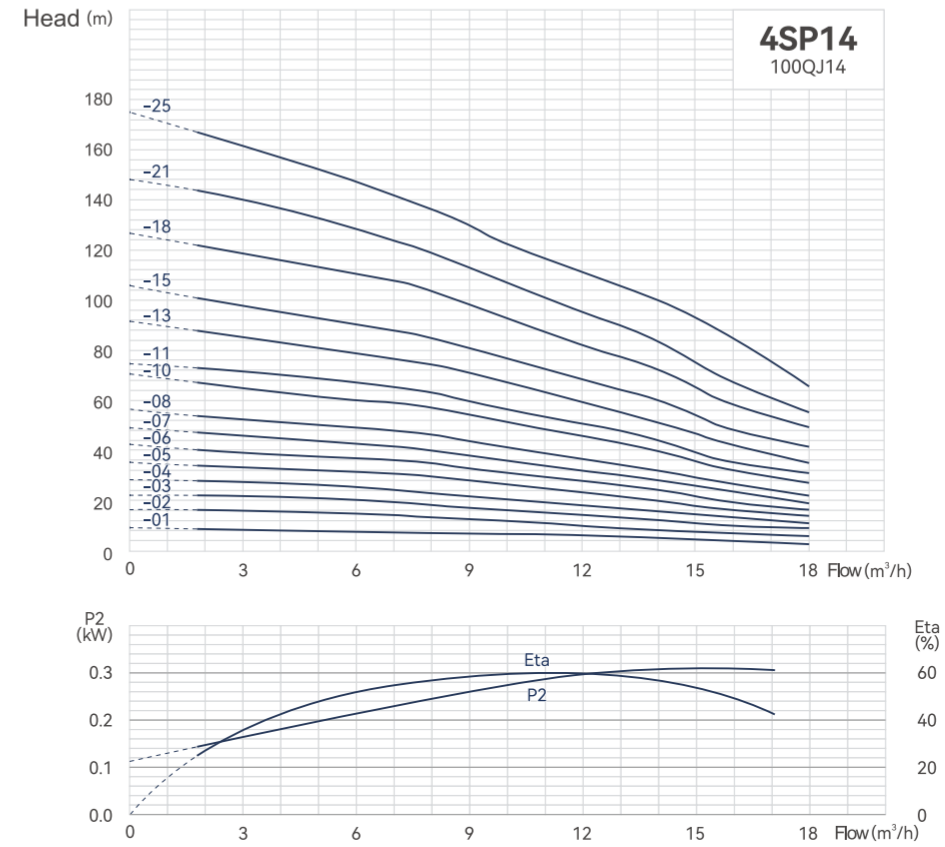
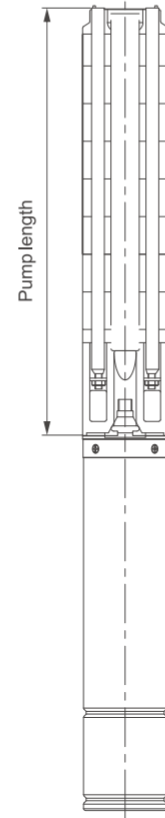
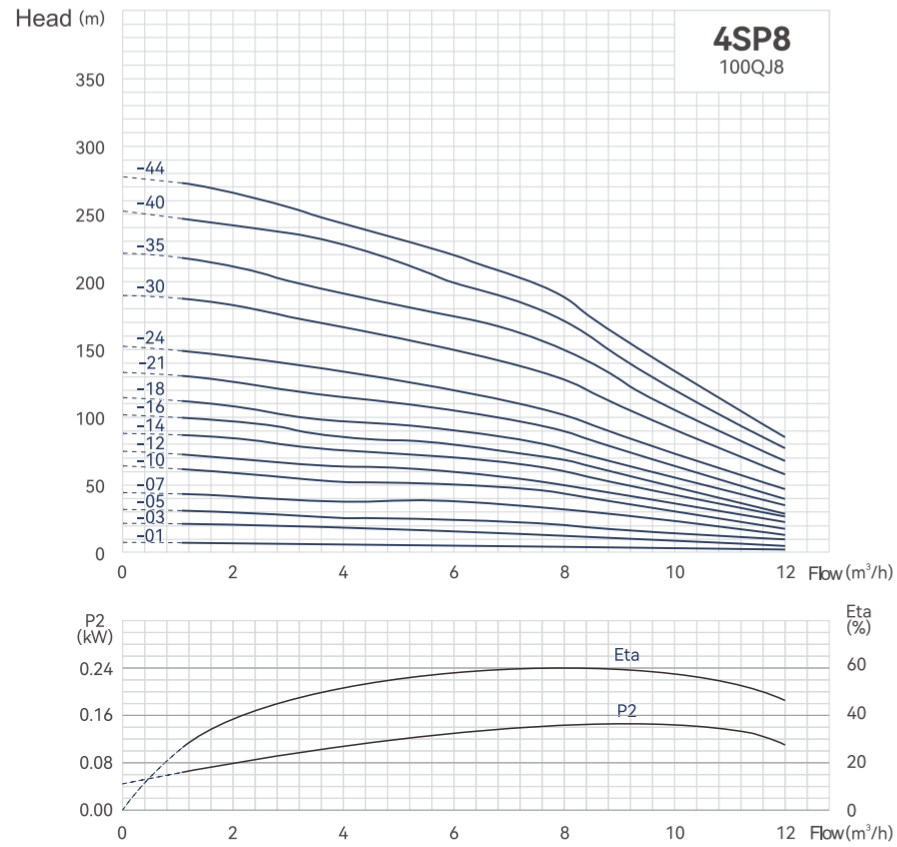
Model number	Motor		m³/h	Flow(n≈2850r/min)							Pump length (mm)	Pump weight (kg)	Outlet diameter
	KW	HP		0	1	2	3	5	6	6.6			
4SP5-02	0.37	0.5	Head (m)	14	12	11	10	8	6	4	193	1.6	DN40 1-1/2"
4SP5-04	0.37	0.5		25	24	22	20	16	12	8	235	2.1	
4SP5-06	0.55	0.75		38	36	33	30	24	18	13	277	2.5	
4SP5-08	0.75	1		50	47	44	40	32	24	17	319	2.9	
4SP5-12	1.1	1.5		76	72	67	60	48	36	25	403	3.8	
4SP5-15	1.5	2		94	88	76	71	60	45	32	466	4.5	
4SP5-17	1.5	2		107	99	91	86	68	51	36	508	5.0	
4SP5-22	2.2	3		139	130	122	110	88	66	46	613	6.0	
4SP5-25	2.2	3		159	145	137	125	100	75	53	676	6.7	
4SP5-33	3	4		208	192	182	165	132	99	69	876	8.5	
4SP5-38	4	5.5		239	220	209	190	152	114	80	981	9.6	
4SP5-40	4	5.5		252	241	223	200	160	120	84	1023	10.1	
4SP5-44	4	5.5		275	259	242	220	176	132	92	1107	11	
4SP5-48	5.5	7.5		300	282	266	240	192	144	100	1191	11.9	
4SP5-52	5.5	7.5		326	302	287	260	208	156	109	1275	12.8	

4SP8A STAINLESS STEEL FOUNTAIN PUMP

Stainless steel fountain pump

4SP14A STAINLESS STEEL FOUNTAIN PUMP

Stainless steel fountain pump



性能参数/Performance parameters

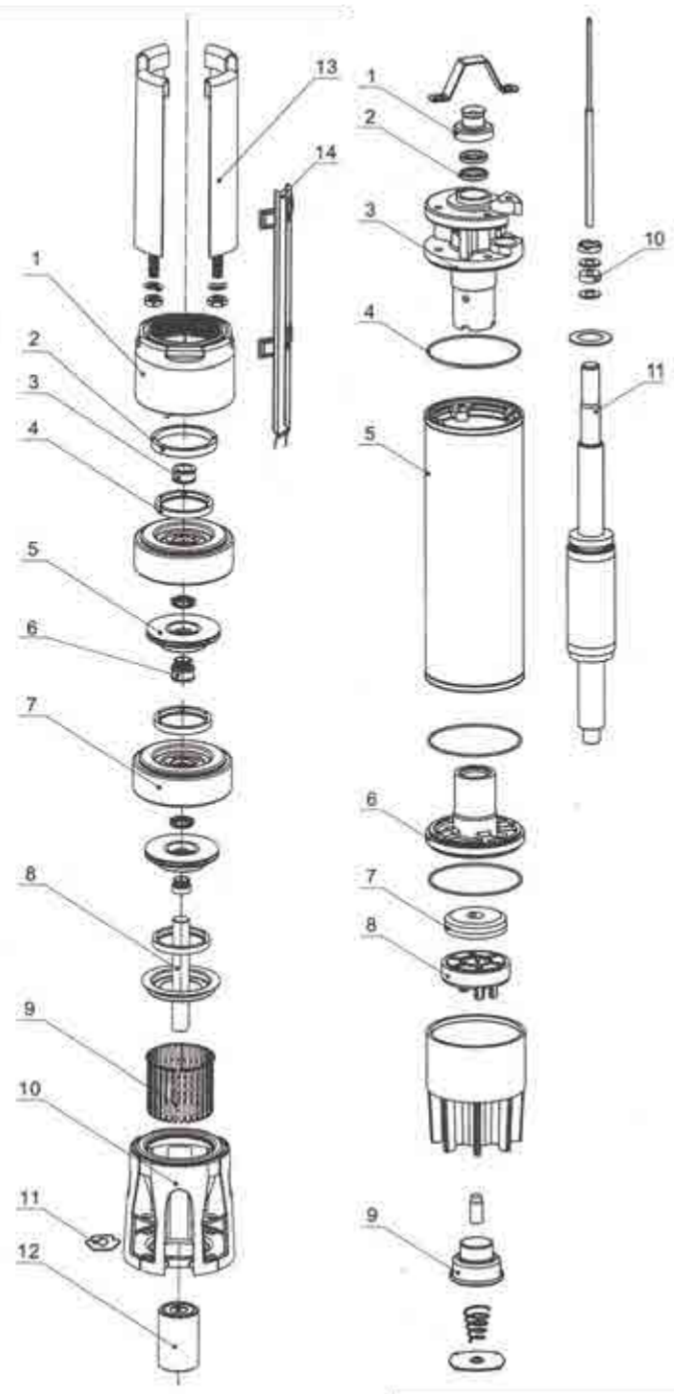
Model number	Motor		m³/h	Flow(n=2850r/min)								Pump length (mm)	Pump weight (kg)	Outlet diameter
	KW	HP		0	2	4	6	8	10	12				
4SP8-01	0.37	0.5	Head (m)	8	7	6	5	4	3	2	223.5	2.0	DN50 2"	
4SP8-03	0.55	0.75		21	20	18	15	12	9	6	308.5	3.1		
4SP8-05	0.75	1.1		32	30	26	25	21	15	10	393.5	4.2		
4SP8-07	1.1	1.5		44	41	36	35	30	21	13	478.5	5.2		
4SP8-10	1.5	2		63	59	52	50	43	30	19	606	6.9		
4SP8-12	2.2	3		76	70	63	60	51	36	23	691	7.9		
4SP8-14	2.2	3		89	84	74	70	60	42	27	776	9.0		
4SP8-16	3	4		101	97	85	80	69	48	29	861	10.1		
4SP8-18	3	4		114	109	95	90	77	54	34	946	11.2		
4SP8-21	4	5.5		133	128	115	105	90	63	40	1073.5	12.8		
4SP8-24	4	5.5		152	145	132	120	103	72	46	1201	14.4		
4SP8-30	5.5	7.5		190	183	166	150	129	90	57	1456	17.6		
4SP8-35	5.5	7.5		221	211	192	175	150	105	67	1668.5	20.3		
4SP8-40	7.5	10		252	243	228	200	172	120	76	1881	23.0		
4SP8-44	7.5	10		278	268	243	220	189	132	84	2051	25.2		

性能参数/Performance parameters

Model number	Motor		m³/h	Flow(n=2850r/min)								Pump length (mm)	Pump weight (kg)	Outlet diameter
	KW	HP		0	6	8	10	14	16	18				
4SP14-01	0.37	0.5	Head (m)	9	8	7	6	5	4	3	248	2.4	DN50 2"	
4SP14-02	0.75	1.1		16	15	13	12	8	7	6	310	3.0		
4SP14-03	1.1	1.5		22	20	18	16	12	10	9	372	3.7		
4SP14-04	1.5	2		28	25	23	20	16	13	11	434	4.3		
4SP14-05	1.5	2		35	31	29	26	20	16	14	496	5.0		
4SP14-06	2.2	3		42	36	35	31	24	19	16	558	5.6		
4SP14-07	2.2	3		49	42	40	35	28	23	19	620	6.3		
4SP14-08	3	4		56	48	46	41	32	26	22	682	6.9		
4SP14-10	3	4		70	60	57	51	40	32	27	806	8.2		
4SP14-11	4	5.5		74	67	63	56	44	35	29	868	8.9		
4SP14-13	4	5.5		91	79	74	67	52	42	35	992	10.2		
4SP14-15	5.5	7.5		105	89	85	76	60	48	41	1116	11.5		
4SP14-18	5.5	7.5		126	110	103	91	72	58	49	1302	13.4		
4SP14-21	7.5	10		147	128	119	106	84	67	55	1488	15.4		
4SP14-25	7.5	10		175	151	143	129	100	80	65	1736	18.0		

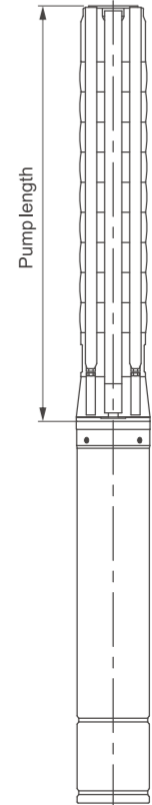
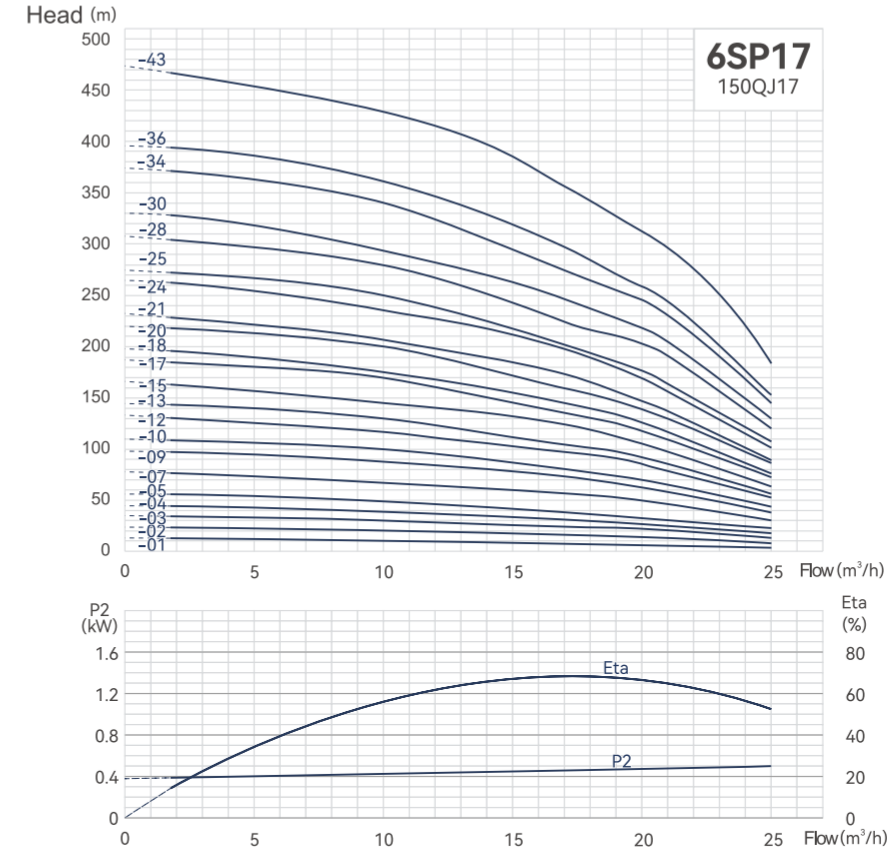
泵体结构说明/Description of pump structure

No.	Name of parts	Material
1	Outlet segment	SS304
2	Valve body	SS304
3	Guide bearing	PBT/NBR
4	O ring	SS304
5	Impeller	SS304
6	Adapter sleeve	SS304
7	Guide vane	SS304
8	Pump spindle	SS304
9	Strainer	SS304
10	Inlet segment	SS304/420/431
11	Stiffening plate	SS304
12	Coupling	SS304
13	Covered Cables	SS304
14	Puller Strap	SS304



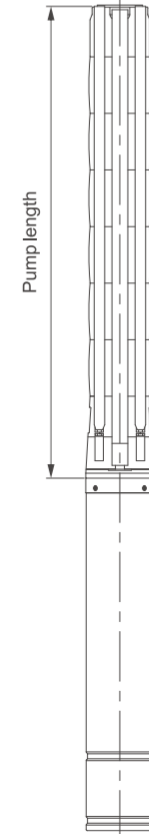
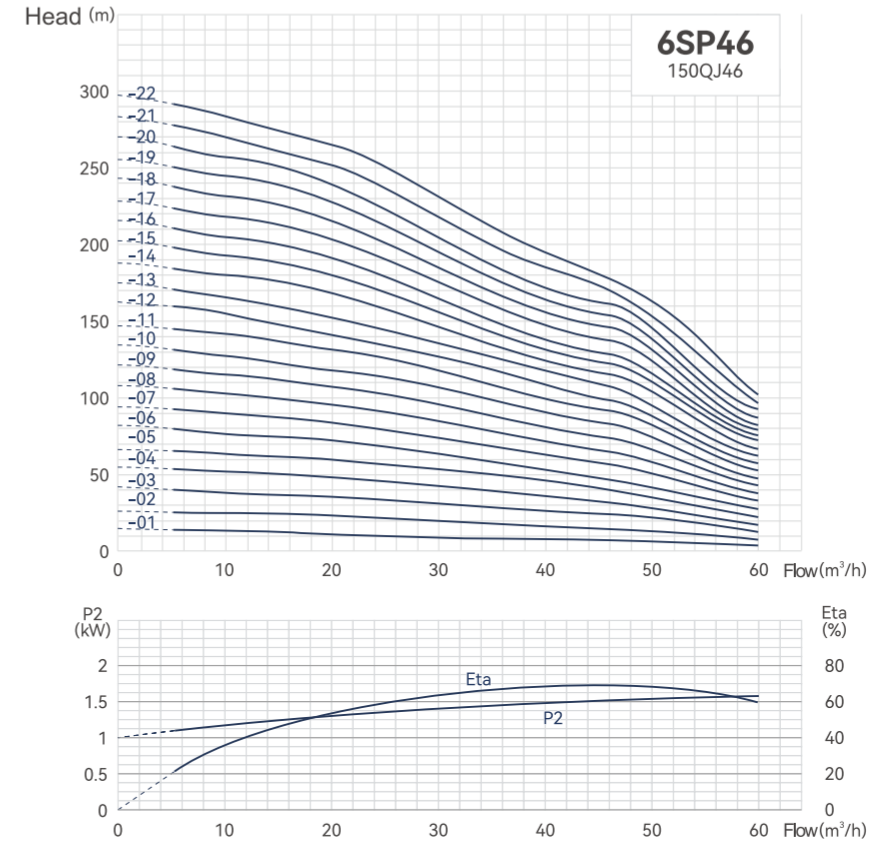
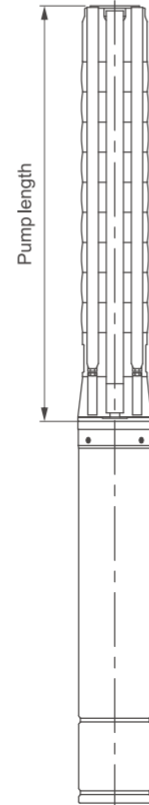
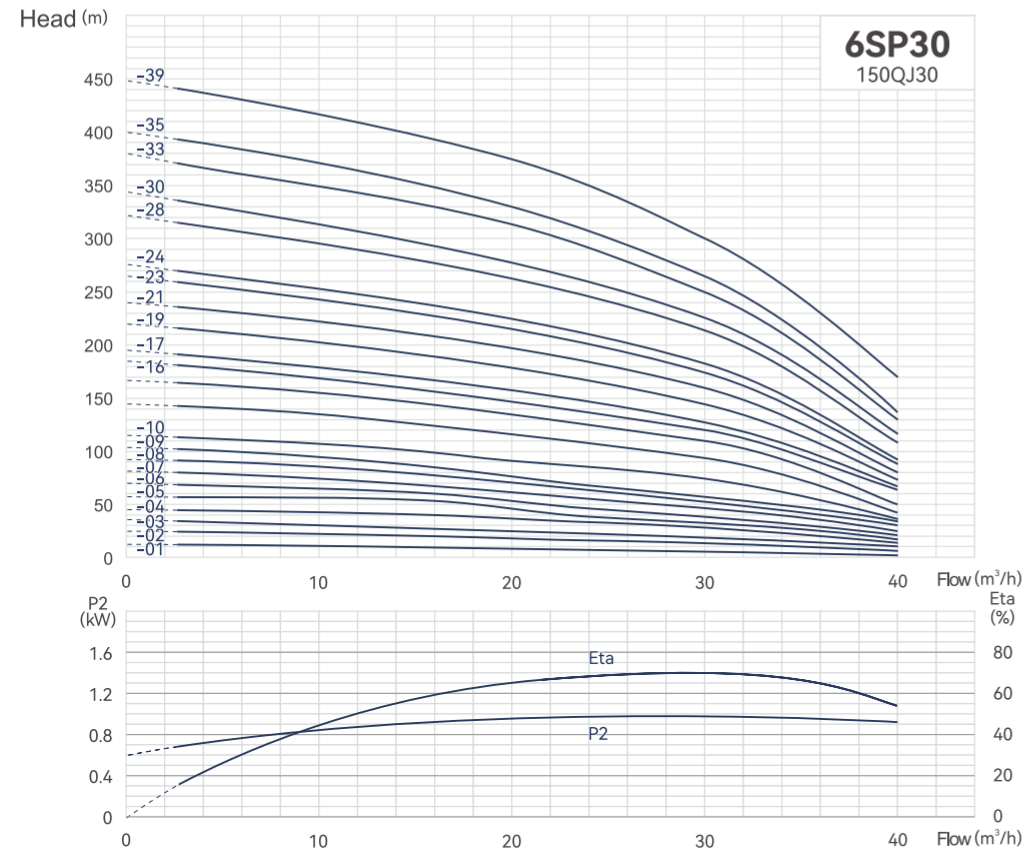
电机结构说明/Motor structure description

No.	Name of parts	Material
1	Slinger(Sand guard)	Rubber
2	Lip seal sleeve	PU(polyurethane)
3	Upper bearing body	HT200
4	O-ring seal	Rubber
5	Stator	WW600
6	Lower bearing body	HT200
7	Thrust bearing support	SIC+C
8	Thrust bearing	3Cr13
9	Membrane	Rubber
10	Seal ring	Rubber
11	Rotor	WW600



性能参数/Performance parameters

Model number	Motor		Flow(n≈2850r/min)								Pump length (mm)		Pump weight (kg)		Outlet diameter
	KW	HP	m³/h	0	5	10	15	17	20	25	4寸	6寸	4寸	6寸	
6SP17-01	0.55	0.75	11	10.5	10	8.5	8	7	4.3	293.5	/	4.1	/	DN65/DN80 2.5"3"	
6SP17-02	1.1	1.5	22	21	20	17	16	14	8.5	341	/	4.9	/		
6SP17-03	2.2	3	33	31.5	30	25.5	24	21	13	388.5	/	5.8	/		
6SP17-04	2.2	3	44	42	39	34	32	28	17	436	/	6.7	/		
6SP17-05	3	4	55	52.5	49	42.5	41	35	22	483.5	/	7.6	/		
6SP17-07	4	5.5	77	73.5	68	59.5	58	49	30	578.5	601.5	9.4	9.8		
6SP17-09	5.5	7.5	99	94.5	88	76.5	74	63	38	673.5	696.5	11.1	11.5		
6SP17-10	5.5	7.5	110	105	100	85	80	70	43	721	744	12.0	12.5		
6SP17-12	7.5	10	132	126	117	105	99	84	51	816	839	13.8	14.3		
6SP17-13	7.5	10	143	136.5	130	110.5	104	91	56	863.5	886.5	14.7	15.2		
6SP17-15	9.2	12.5	165	157.5	146	131	124	105	64	/	981.5	/	16.4		DN65/DN80 2.5"3"
6SP17-17	9.2	12.5	187	178.5	170	144.5	136	119	73	/	1076.5	/	18.2		
6SP17-18	11	15	198	189	175	157	148	126	76	/	1124	/	19.1		
6SP17-20	11	15	220	210	200	170	160	140	86	/	1219	/	20.8		
6SP17-21	13	18	231	220.5	205	184	173	147	89	/	1266.5	/	21.7		
6SP17-24	15	20	264	252	234	210	198	168	102	/	1409	/	24.4		
6SP17-25	15	20	275	262.5	250	212.5	200	175	107	/	1456.5	/	25.3		
6SP17-28	18.5	25	308	294	280	238	224	196	120	/	1599	/	27.9		
6SP17-30	18.5	25	330	315	292	262	247	210	127	/	1694	/	29.7		
6SP17-34	22	30	374	357	340	289	272	238	146	/	1884	/	33.2		
6SP17-36	22	30	396	378	351	315	297	252	153	/	1979	/	35.0		
6SP17-43	26	35	473	451.5	419	376	355	301	183	/	2311.5	/	41.1		



性能参数/Performance parameters

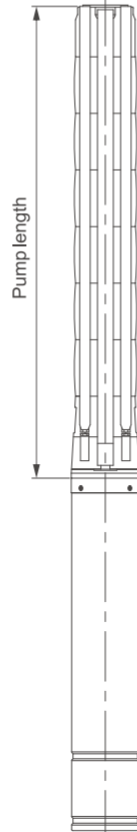
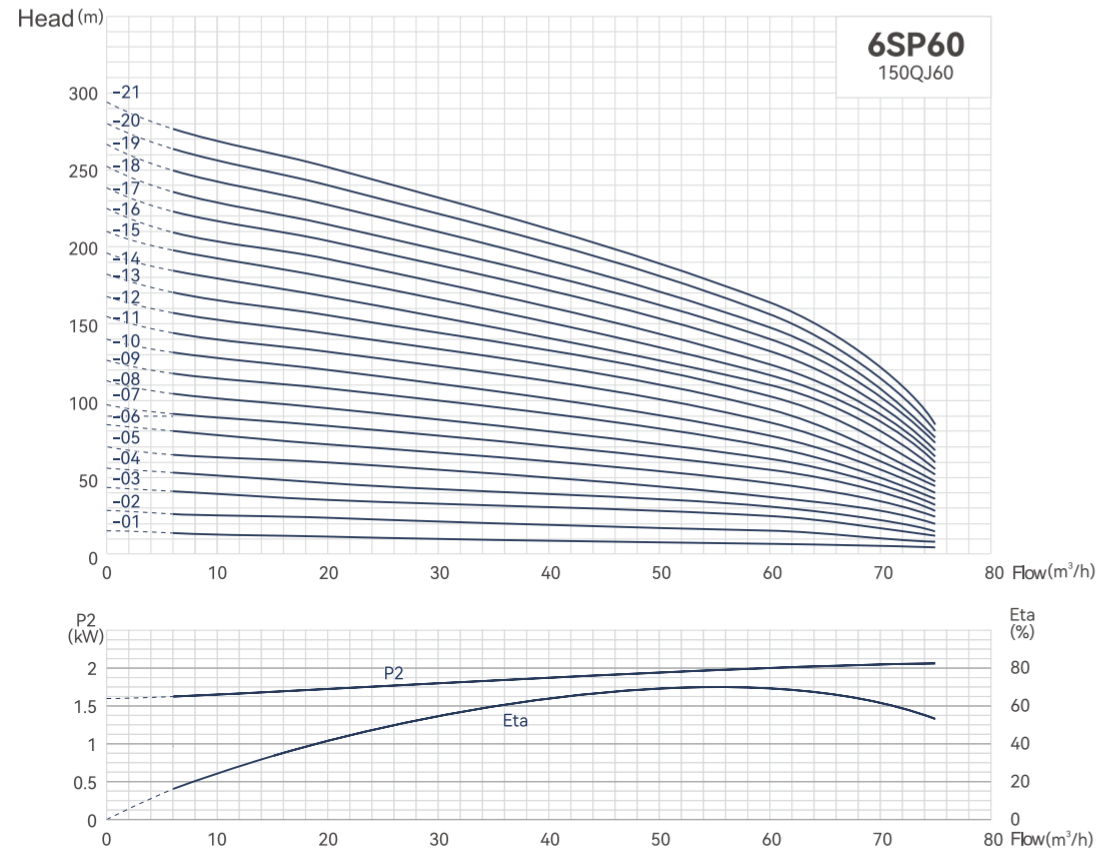
Model number	Moter		Flow(n≈2850r/min)							Pump length (mm)		Pump weight (kg)	Outlet diameter	
	KW	HP	m³/h	0	12	20	25	30	35	40	4寸			6寸
6SP30-01	1.1	1.5	12	11	10	9	8	6	3.6	299.5	/	4.2	/	DN65/DN80 2.5'3"
6SP30-02	2.2	3	24	22	20	18	16	12	7.2	356	/	5.3	/	
6SP30-03	3	4	35	32	28	26	22	18	10.8	412.5	/	6.3	/	
6SP30-04	4	5.5	46	44	40	36	32	24	14.4	469	493	7.3	7.7	
6SP30-05	5.5	7.5	58	55	53	45	39	30	18	525.5	549.5	8.3	8.7	
6SP30-06	7.5	10	70	66	60	54	47	36	21.6	582	606	9.4	9.7	
6SP30-07	7.5	10	81	77	67	63	56	42	25	638.5	662.5	10.4	10.8	
6SP30-08	7.5	10	92	87	77	71	62	48	30	695	719	11.4	11.8	
6SP30-09	9.2	12.5	104	96	86	79	68	54	35	/	775.5	/	12.8	
6SP30-10	9.2	12.5	115	106	95	87	75	60	38	/	832	/	13.8	
6SP30-12	11	15	144	132	126	108	94	72	42	/	945	/	15.9	
6SP30-14	13	18	168	154	148	126	110	84	50	/	1058	/	18.0	
6SP30-16	15	20	185	170	153	140	122	96	64	/	1171	/	20.0	
6SP30-17	15	20	195	180	161	148	129	102	67	/	1227.5	/	21.0	
6SP30-19	18.5	25	220	204	182	168	145	114	77	/	1340.5	/	23.1	
6SP30-21	18.5	25	240	223	200	183	160	126	80	/	1453.5	/	25.1	
6SP30-23	22	30	265	245	220	202	175	138	90	/	1566.5	/	27.2	
6SP30-24	22	30	275	255	228	210	182	144	94	/	1623	/	28.2	
6SP30-28	26	35	321	298	268	245	213	168	110	/	1849	/	32.3	
6SP30-30	26	35	345	318	285	260	225	180	117	/	1962	/	34.3	
6SP30-33	30	40	380	352	315	290	252	196	130	/	2131.5	/	37.4	
6SP30-35	30	40	400	372	330	305	265	205	138	/	2244.5	/	39.5	
6SP30-39	37	45	449	415	374	345	300	235	170	/	2470.5	/	43.6	

性能参数/Performance parameters

Model number	Moter		Flow(n≈2850r/min)								Pump length (mm)		Pump weight (kg)		Outlet diameter
	KW	HP	m³/h	0	10	20	35	40	46	55	60	4寸	6寸	4寸	
6SP46-1	1.5	2.2	13	12	11	10	9	8	7	4	360	/	5.5	/	DN80 3"
6SP46-2	3	4	27	25	23	21	18	16	14	8	474	/	7.9	/	
6SP46-3	5.5	7.5	41	39	36	32	28	24	22	13	588	611	10.2	10.7	
6SP46-4	7.5	10	54	52	48	44	39	32	29	18	702	725	12.7	13.1	
6SP46-5	7.5	10	67	64	60	54	48	40	37	23	816	839	15.0	15.5	
6SP46-6	9.2	12.5	81	77	72	66	59	48	44	28	/	953	/	17.4	
6SP46-7	11	15	94	90	84	76	67	57	52	33	/	1067	/	19.8	
6SP46-8	13	18	108	103	96	87	77	65	59	38	/	1181	/	22.2	
6SP46-9	15	20	121	116	107	98	86	74	67	43	/	1295	/	24.6	
6SP46-10	15	20	135	129	119	109	96	82	74	48	/	1409	/	26.9	
6SP46-11	18.5	25	148	141	131	119	105	91	82	53	/	1523	/	29.3	
6SP46-12	18.5	25	162	154	143	130	115	99	89	58	/	1637	/	31.7	
6SP46-13	22	30	175	167	155	141	124	107	97	62	/	1751	/	34.1	
6SP46-14	22	30	189	180	167	152	134	115	104	67	/	1865	/	36.4	
6SP46-15	22	30	202	193	179	163	144	123	111	72	/	1979	/	38.8	
6SP46-16	25	34	216	206	191	174	154	129	117	74	/	2093	/	41.2	
6SP46-17	25	34	229	219	203	185	163	137	125	79	/	2207	/	43.6	
6SP46-18	30	40	243	231	215	195	173	146	132	83	/	2321	/	46.0	
6SP46-19	30	40	256	245	227	207	182	153	140	88	/	2435	/	48.3	
6SP46-20	30	40	270	257	239	217	192	161	147	93	/	2549	/	50.7	
6SP46-21	37	50	283	270	251	228	202	170	154	97	/	2663	/	53.1	
6SP46-22	37	50	297	283	263	239	211	178	162	102	/	2777	/	55.5	

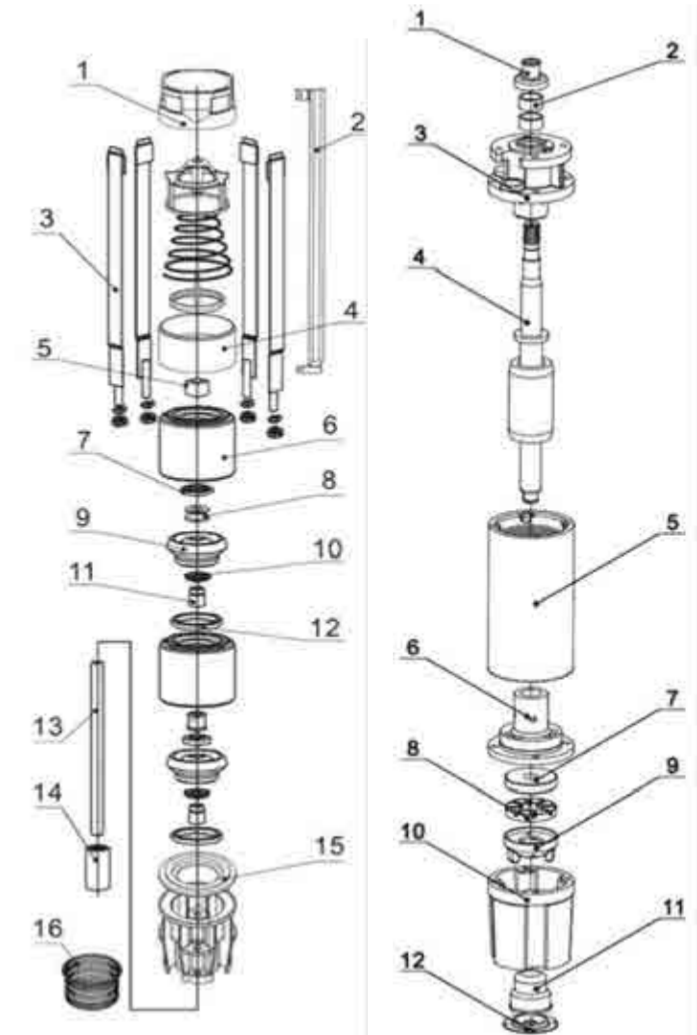
Stainless steel fountain pump

Structure Description



泵体结构说明/Description of pump structure

No.	Name of parts	Material
1	Outlet segment	SS304
2	Covered Cables	SS304
3	Puller strap	PBT/NBR
4	Valve body	SS304
5	Guide vane	SS304
6	Guide bearing	PBT/NBR
7	Anti-channeling disc	Polytef
8	Nut tray	SS304
9	Impeller	SS304
10	Hexagon nut	SS304
11	Split cone	SS304
12	O ring	NBR/Fluororubber
13	Pump spindle	SS304
14	Coupling	SS304
15	Inlet segment	SS304
16	Strainer	SS304

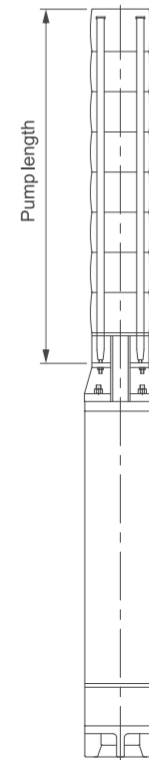
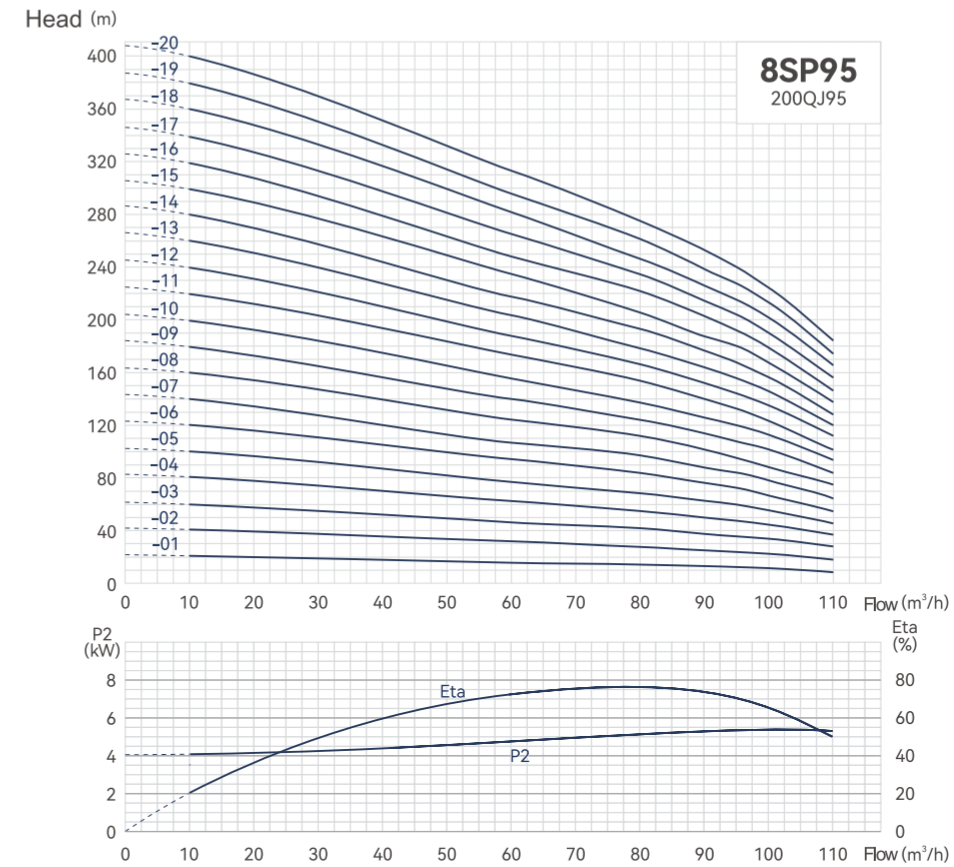
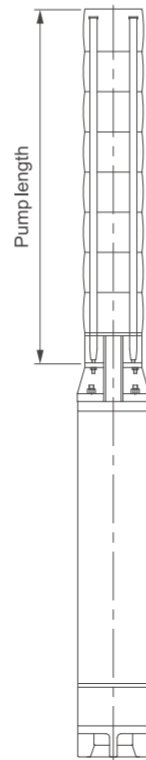
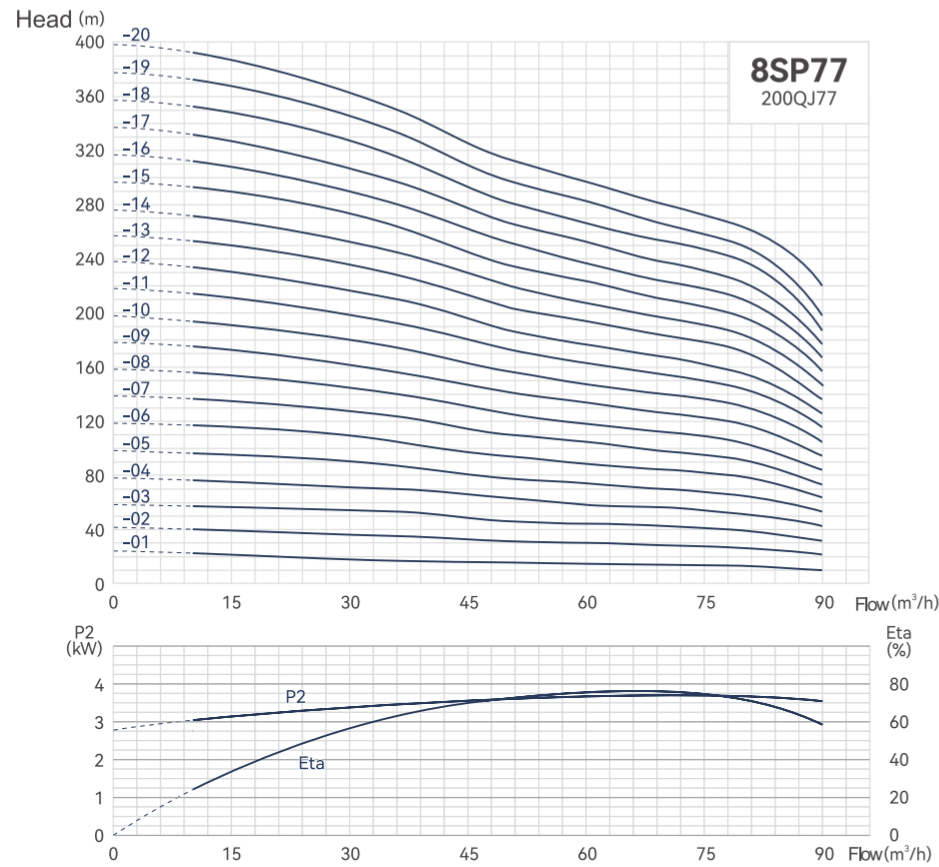


性能参数/Performance parameters

Model number	Motor		m³/h	Flow(n=2850r/min)								Pump length (mm)		Pump weight (kg)		Outlet diameter	
	KW	HP		0	20	30	40	50	60	65	75	4寸	6寸	4寸	6寸		
6SP60-01	2.2	3	Head (m)	14	12	11	10	9	8	7	4	360	/	5.5	/	DN80 3"	
6SP60-02	4	5.5		28	24	22	20	18	16	14	8	474	497	7.9	8.4		
6SP60-03	5.5	7.5		42	36	33	30	27	24	21	12	588	611	10.3	10.7		
6SP60-04	7.5	10		56	48	44	40	36	31	28	16	702	725	12.7	13.1		
6SP60-05	9.2	12.5		70	60	55	50	45	39	34	20	/	839	/	15.1		/
6SP60-06	11	15		84	72	66	60	54	46	41	24	/	953	/	17.5		/
6SP60-07	13	18		98	84	77	70	63	55	49	28	/	1067	/	19.8		/
6SP60-08	15	20		112	96	88	80	72	62	55	32	/	1181	/	22.2		/
6SP60-09	18.5	25		126	108	99	90	81	70	62	36	/	1295	/	24.6		/
6SP60-10	18.5	25		140	120	110	100	90	78	69	40	/	1409	/	27.0		/
6SP60-11	22	30		154	132	121	110	100	86	76	44	/	1523	/	29.4		/
6SP60-12	22	30		168	144	132	120	110	94	83	48	/	1637	/	31.8		/
6SP60-13	25	34		182	156	143	130	118	102	90	52	/	1751	/	34.1		/
6SP60-14	25	34		196	168	154	140	128	110	97	56	/	1865	/	36.5		/
6SP60-15	25	34		210	180	165	150	135	117	104	60	/	1979	/	38.9		/
6SP60-16	30	40		224	192	176	160	144	124	111	64	/	2093	/	41.3		/
6SP60-17	30	40		238	204	187	170	153	132	118	68	/	2207	/	43.7		/
6SP60-18	30	40		252	216	198	180	162	140	125	72	/	2321	/	46.1		/
6SP60-19	37	50		266	228	209	190	171	148	132	76	/	2435	/	48.4		/
6SP60-20	37	50		280	240	220	200	180	157	139	80	/	2549	/	50.8		/
6SP60-21	37	50		294	252	231	210	189	164	146	84	/	2663	/	53.2		/

电机结构说明/Motor structure description

No.	Name of parts	Material
1	Slinger(Sand guard)	Rubber
2	Bearing	Graphite
3	Upper bearing body	Cast iron
4	Rotor	Cold rolled silicon steel sheet
5	Stator	Cold rolled silicon steel sheet+SS304
6	Lower bearing body	Cast iron
7	Thrust bearing support	SS420
8	Thrust bearing	Graphite
9	Thrust bearing body	Cast iron
10	Base	Cast iron
11	Membrane	Rubber
12	End cover	SS304



性能参数/Performance parameters

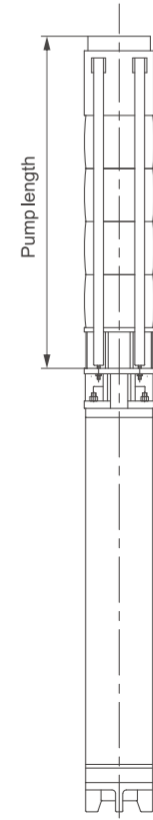
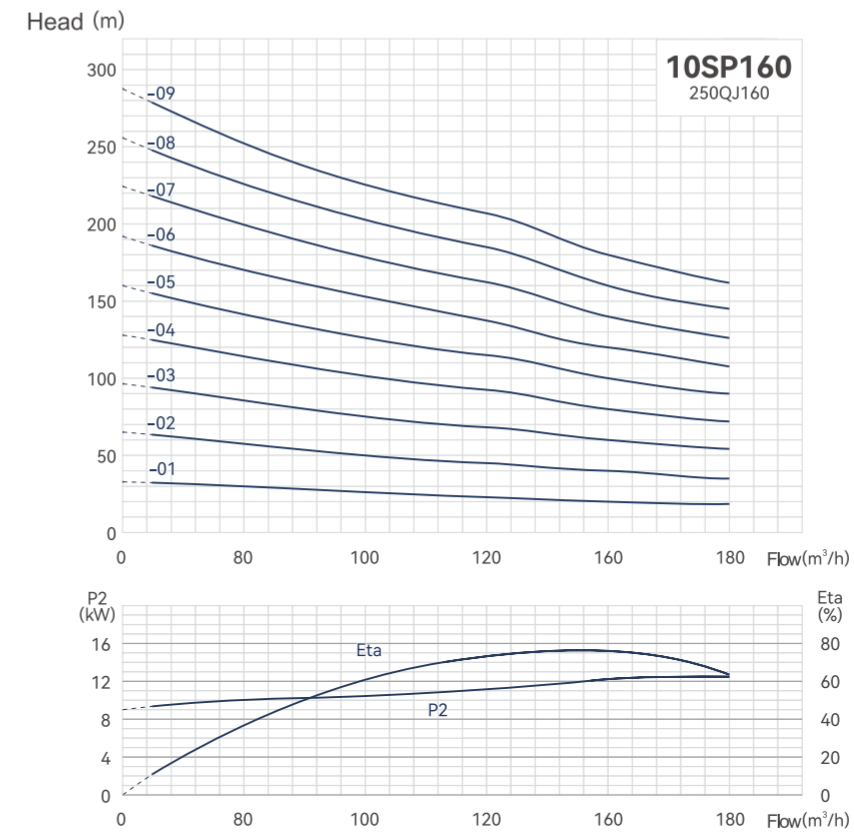
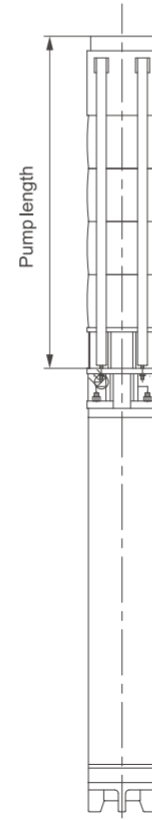
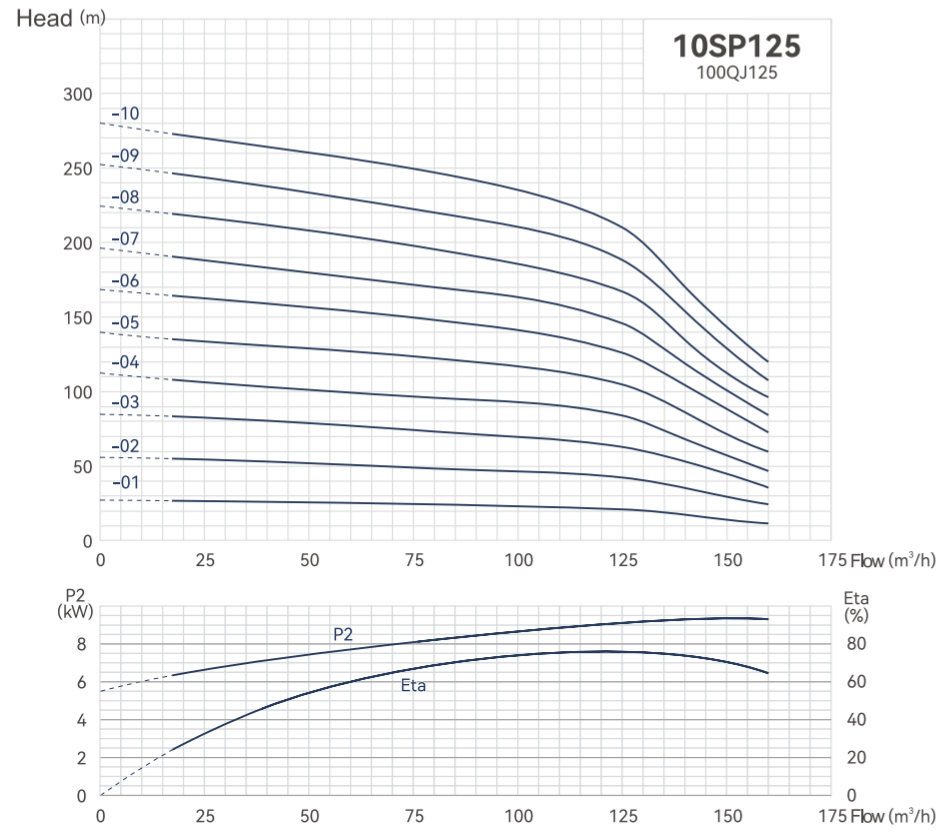
Model number	Motor		m³/h	Flow(n=2850r/min)							Pump length (mm)	Pump weight (kg)	Outlet diameter
	KW	HP		0	36	50	60	70	77	90			
8SP77-01	4	5.5	Head (m)	21	17.5	16	15	14	13	10	392	12	DN100/DN125 4"5"
8SP77-02	7.5	10		42	35	31	30	28	27	21	496	15.3	
8SP77-03	11	15		59	53	47	44	42	40	31	600	18.6	
8SP77-04	15	20		79	70	63	59	56	53	42	704	21.9	
8SP77-05	18.5	25		99	88	78	74	70	67	52	808	25.7	
8SP77-06	22	30		119	105	94	89	84	80	63	912	29	
8SP77-07	26	35		139	123	110	104	98	93	73	1016	32.3	
8SP77-08	30	40		159	140	125	119	112	107	84	1120	35.6	
8SP77-09	37	50		179	157	141	134	126	120	95	1224	38.9	
8SP77-10	37	50		198	174	157	148	140	133	105	1328	42.2	
8SP77-11	45	60		218	192	172	163	154	147	116	1432	45.5	
8SP77-12	45	60		238	210	188	178	168	160	126	1536	48.8	
8SP77-13	55	75		258	228	204	193	182	173	136	1640	52.1	
8SP77-14	55	75		277	245	220	207	196	187	147	1744	55.4	
8SP77-15	55	75		297	263	235	222	210	200	157	1848	58.7	
8SP77-16	63	85		317	280	251	237	224	213	168	1952	62	
8SP77-17	63	85		337	298	266	252	238	227	178	2056	65.3	
8SP77-18	75	100		357	315	281	267	252	241	188	2160	68.6	
8SP77-19	75	100		377	332	297	282	266	253	199	2264	71.9	
8SP77-20	75	100		397	350	313	297	280	267	210	2368	75.2	

性能参数/Performance parameters

Model number	Motor		m³/h	Flow(n=2850r/min)							Pump length (mm)	Pump weight (kg)	Outlet diameter
	KW	HP		0	60	80	90	95	100	110			
8SP95-01	5.5	7.5	Head (m)	21	16	14	13	12	11	9	392	11.8	DN100/DN125 4"5"
8SP95-02	9.2	12.5		41	31	28	25	24	22	18	496	15.2	
8SP95-03	13	17.5		61	47	41	38	36	33	28	600	18.6	
8SP95-04	18.5	25		82	62	55	50	48	45	37	704	22.5	
8SP95-05	22	30		102	78	69	63	60	56	46	808	25.9	
8SP95-06	26	35		123	94	83	76	72	67	55	912	29.3	
8SP95-07	30	40		143	109	97	88	84	78	64	1016	32.7	
8SP95-08	37	50		163	124	111	100	96	89	75	1120	36.1	
8SP95-09	37	50		184	140	124	113	108	101	83	1224	39.5	
8SP95-10	45	60		204	156	138	126	120	112	93	1328	42.9	
8SP95-11	45	60		225	172	152	139	132	123	101	1432	46.3	
8SP95-12	55	75		246	188	166	151	144	135	111	1536	49.7	
8SP95-13	55	75		267	203	179	164	156	146	120	1640	53.1	
8SP95-14	63	85		287	218	192	177	168	157	129	1744	56.5	
8SP95-15	63	85		306	234	207	189	180	168	138	1848	59.9	
8SP95-16	75	100		326	249	221	202	192	179	147	1952	63.3	
8SP95-17	75	100		347	265	234	214	204	190	156	2056	66.7	
8SP95-18	90	125		368	281	247	226	216	201	165	2160	70.1	
8SP95-19	90	125		388	297	261	239	228	212	174	2264	73.5	
8SP95-20	90	125		408	312	276	252	240	224	184	2368	76.9	

Stainless steel fountain pump

Stainless steel fountain pump



性能参数/Performance parameters

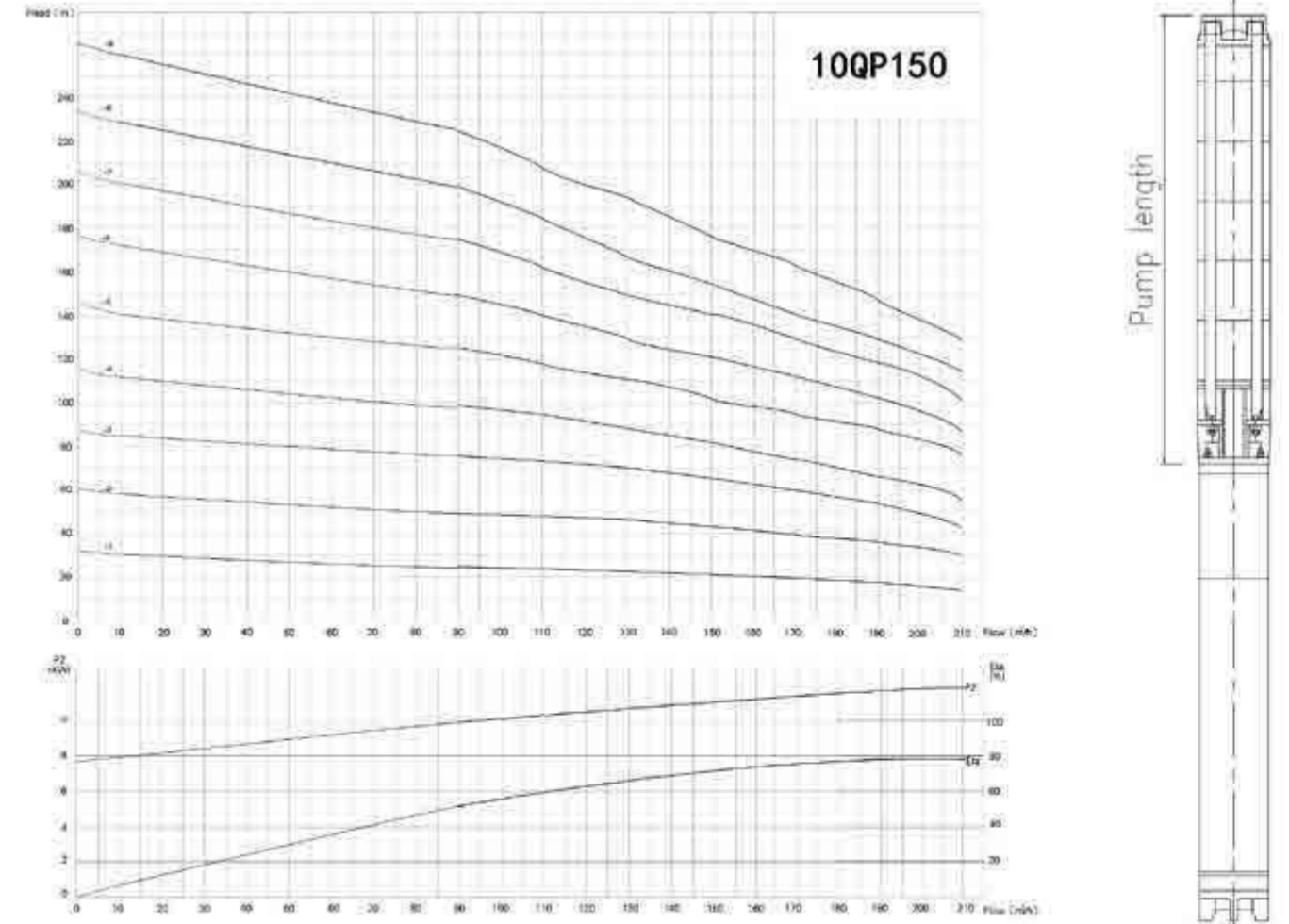
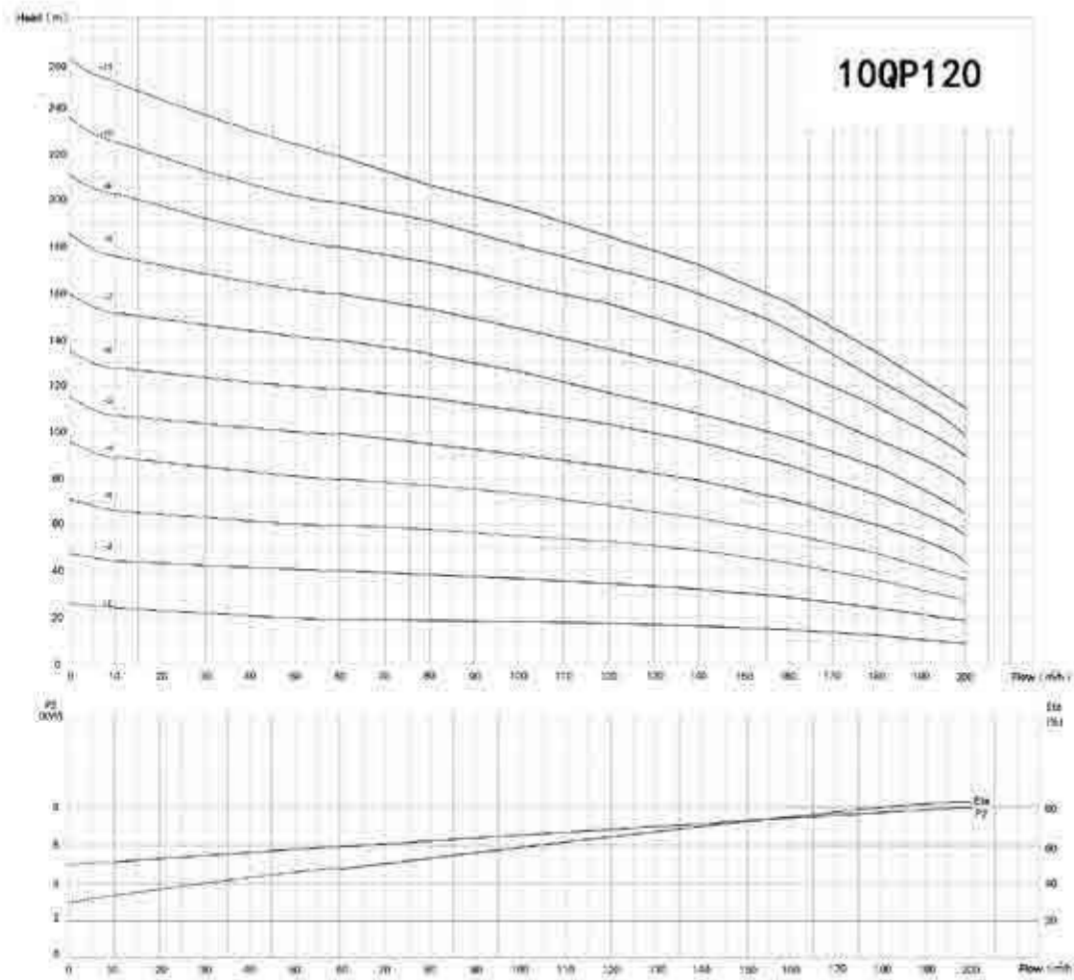
Model number	Motor		Flow (m³/h)	Flow (n≈2850r/min)							Pump length (mm)	Pump weight (kg)	Outlet diameter
	KW	HP		0	50	80	100	125	140	160			
10SP125-01	11	15	28	27	24	23	21	17	12	590	24.4	DN150 6"	
10SP125-02	22	30	56	54	48	46	42	34	24	736	30.5		
10SP125-03	30	40	84	81	72	69	63	51	36	882	36.6		
10SP125-04	37	50	112	108	96	92	84	68	48	1028	42.7		
10SP125-05	45	60	140	135	120	115	105	85	60	1174	48.8		
10SP125-06	55	75	168	162	144	138	126	102	72	1320	54.9		
10SP125-07	63	83	196	189	168	161	147	119	84	1466	61		
10SP125-08	75	100	224	216	192	184	168	136	96	1612	67.1		
10SP125-09	90	125	252	243	220	207	189	153	108	1758	73.2		
10SP125-10	110	150	280	270	246	230	210	170	120	1904	79.3		

性能参数/Performance parameters

Model number	Motor		Flow (m³/h)	Flow (n≈2850r/min)						Pump length (mm)	Pump weight (kg)	Outlet diameter
	KW	HP		0	80	100	120	160	180			
10SP160-01	15	18.5	32	28	25	23	20	18	600	24.8	DN150 6"	
10SP160-02	26	40	64	56	50	46	40	36	756	31.2		
10SP160-03	37	50	96	84	75	69	60	54	912	37.6		
10SP160-04	55	75	128	112	100	92	80	72	1068	44		
10SP160-05	63	85	160	140	125	115	100	90	1224	50.4		
10SP160-06	75	100	192	168	150	138	120	108	1380	56.8		
10SP160-07	90	125	224	196	175	161	140	126	1536	63.2		
10SP160-08	90	125	256	224	200	184	160	144	1692	69.6		
10SP160-09	110	150	288	252	225	207	180	162	1848	76		

Casting Stainless Steel Fountain Pump

Casting Stainless Steel Fountain Pump



性能参数/Performance parameters

Model No.	Motor		Q(m³/h)	Flow(n≈2850r/min)								Pump Length(mm)	Pump Weight(kg)	Outlet Diameter
	kW	HP		60	80	100	120	140	160	180	200			
QP120-1	9.2	12.5	H(m)	20	19	18	17	16	14	12	9	530	25.4	DN150 6"
QP120-2	18.5	25		40	38	36	34	32	28	24	18	690	34	
QP120-3	30	40		60	57	54	51	48	42	36	27	850	42.5	
QP120-4	37	50		80	76	72	68	64	56	48	36	1010	51	
QP120-5	45	60		100	95	90	85	80	70	60	45	1170	59	
QP120-6	55	75		120	114	108	102	96	84	72	54	1330	71.5	
QP120-7	63	85		140	133	126	119	112	98	84	63	1490	80	
QP120-8	75	100		160	152	144	136	128	112	96	72	1650	88	
QP120-9	90	125		180	171	162	153	144	126	108	81	1810	96.5	
QP120-10	90	125		200	190	180	170	160	140	120	90	1970	105	
QP120-11	110	150		220	209	198	187	176	154	132	99	2130	113	

性能参数/Performance parameters

Model No.	Motor		Q(m³/h)	Flow(n≈2850r/min)								Pump Length(mm)	Pump Weight(kg)	Outlet Diameter
	kW	HP		90	110	130	140	150	170	190	210			
QP150-1	13	18	H(m)	25	24	23	21	20	18	17	14	530	25.6	DN150 6"
QP150-2	25	34		50	48	46	42	40	36	34	28	690	34.5	
QP150-3	37	50		75	72	69	63	60	54	51	42	850	43	
QP150-4	55	75		100	96	92	84	80	72	68	56	1010	51.5	
QP150-5	63	85		125	120	115	105	100	90	85	70	1170	64	
QP150-6	75	100		150	144	138	126	120	108	102	84	1330	72.5	
QP150-7	90	125		175	168	161	147	140	126	119	98	1490	81	
QP150-8	110	150		200	192	184	168	160	144	136	112	1650	90	
QP150-9	110	150		225	216	207	189	180	162	153	126	1810	98	

**水流套/Water flow jacket**

Dongda Pumps offers a full range of stainless steel water sleeves for pumps and motors for vertical or horizontal applications.

Where the motor is not cooled enough, the use of water jacket is recommended, and the effect of its use is to extend the service life of the motor.

Water flow bushing is required in the following cases: Pump working conditions are poor, such as current imbalance, dry operation, overload, high ambient temperature, poor cooling environment, etc.

If a corrosive liquid is pumped, the corrosiveness doubles for every 10 °C increase in temperature. If there are deposits or deposits near or on the motor.

**电缆/Cable**

The table indicates the longest cable length in meters for different cable specifications:

from motor starter to pump, direct starting mode.

If the star/triangle starting mode is used, the current will be lower (1×0.58), which means that the cable length can be longer than the data in the table (L×1.73).

For example, the operating current is less than 10% of the full load current, the length of the cable must be 10% longer than the value in the table.

The length of the cable in the table is measured when the maximum voltage drop is 1% and 3% of the rated voltage and the water temperature is up to 30 ° C.

In order to reduce the loss during operation, the cross-sectional area of the cable can be increased compared to the value indicated in the table.

Of course, this is only suitable when the size of the well hole is appropriate and the pump has a long operating time,

especially when the operating voltage is lower than the rated voltage.

The values of the table are based on the following formula:

**Maximum cable length of single-phase submersible pump :**

$$L = \frac{U \times \Delta U}{1 \times 2 \times 100 \times (\cos\phi \times \frac{p}{q} + \sin\phi \times X_L)} \text{ (m)}$$

**Maximum cable length of three-phase submersible pump:**

$$L = \frac{U \times \Delta U}{1 \times 1.73 \times 100 \times (\cos\phi \times \frac{p}{q} + \sin\phi \times X_L)} \text{ (m)}$$

**Symbol in a formula :**

- U =Rated voltage (V)
- ΔU =Voltage drop (%)
- I =The rated current of the motor (A)
- p =Specific impedance: 0.02(Ωmm<sup>2</sup>)
- q =Cross street area of submersible cable (mm<sup>2</sup>)
- X<sub>L</sub> =Inductive impedance: 0.078×10<sup>-3</sup>(Ω/mm)
- cosφ =Power factor
- sinφ = √1-cos<sup>2</sup>φ

**示例 /Example:**

- Motor power: 30kW
- Rated current: 64.0A
- Rated voltage : 3×400V,50Hz
- Starting mode : Direct grid start-up
- Power factor: cosφ=0.85
- Voltage drop: 3%
- Cable street area: 25mm<sup>2</sup>
- sinφ 0.54

$$L = \frac{400 \times 3}{64.0 \times 1.73 \times 100 \times (0.85 \times \frac{0.02}{25} + 0.54 \times 0.078 \times 10^{-3})}$$

L=150m

**1×230V, 50Hz The following cable size**

Electric machine	kW	In(A)	1.5 (mm <sup>2</sup> )	2.5 (mm <sup>2</sup> )	4 (mm <sup>2</sup> )	6 (mm <sup>2</sup> )	10 (mm <sup>2</sup> )
4"	0.37	4.0	111	185	295	440	723
	0.55	5.8	80	133	211	315	518
	0.75	7.5	58	96	153	229	377
	1.1	7.3	48	79	127	190	316
	1.5	10.2	34	57	92	137	228
	2.2	14		43	68	102	169

The maximum cable length is the length from the motor starter to the pump in meters.

**3x380V/50Hz, The cable size with a voltage drop of 3%**

Electric machine	kW	I <sub>n</sub> (A)	Cable cross-sectional area(mm <sup>2</sup> )																	
			1.5	2.5	4	6	10	16	25	35	50	70	95	120	150	185	240	300		
4"	0.37	1.4	576	955																
4"	0.55	2.2	366	608	966															
4"	0.75	2.3	312	518	824															
4"	1.1	3.4	211	350	558	830														
4"	1.5	4.2	164	273	434	646														
4"	2.2	5.5	115	191	304	453	748													
4"	3	7.85	86	142	226	337	555	872												
4"	4	9.6	67	112	178	266	438	689												
4"	5.5	13	49	82	130	194	320	504	768											
4"	7.5	18.8		59	93	139	229	360	548	745										
6"	5.5	13.6	49	82	131	195	320	503	765											
6"	7.5	17.6	37	61	97	145	239	376	573	781										
6"	9.2	21.8		49	78	116	191	300	458	625	860									
6"	11	24.8		42	67	99	164	258	395	540	744	995								
6"	13	30			56	84	139	218	333	454	625	833								
6"	15	34				73	121	191	291	397	547	731	938							
6"	18.5	42				60	99	156	238	324	446	595	763	913						
6"	22	48					84	132	202	276	382	511	659	792	935					
6"	26	57					71	111	170	233	321	431	555	667	788	913				
6"	30	66.5						96	147	201	277	371	477	573	676	782	925			
6"	37	85.5							119	162	223	296	378	451	529	608	713	806		
8"	22	48					84	132	202	276	382	511	659	792	935					
8"	26	56.5					70	111	170	233	322	432	557	671	794	922				
8"	30	64						98	150	205	284	381	492	592	701	814	967			
8"	37	78.5						80	122	168	232	311	401	483	572	664	789	903		
8"	45	96.5							102	140	193	257	330	396	466	539	635	723		
8"	55	114								115	159	214	276	333	394	457	543	622		
8"	63	132									140	187	240	289	340	394	466	531		
8"	75	152									119	160	206	249	295	343	409	469		
8"	92	194										130	169	203	241	281	334	383		
8"	110	224											140	169	200	233	279	321		
12"	75	156											157	203	244	288	334	395	452	
12"	92	194												128	164	197	232	268	316	360
12"	110	228													139	167	197	228	271	309
12"	132	270														141	166	193	228	261
Maximum current suiabe orcsbie(A)			18.5	25	34	43	60	80	101	126	153	196	238	276	319	364	430	497		

\*Under very good heat dissipation conditions

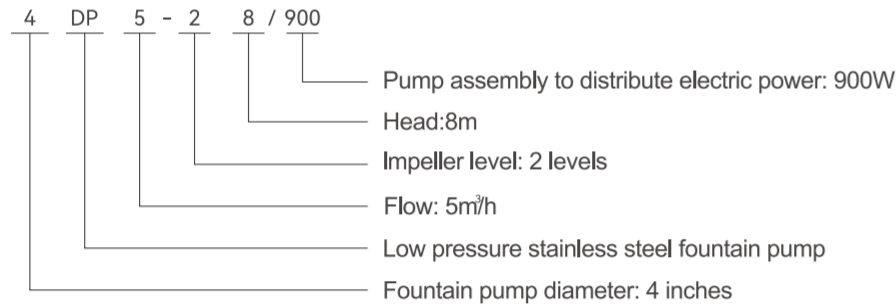
The maximum cable length is the length from the motor starter to the pump, in meters.



Low pressure DC fountain pump

Low pressure DC fountain pump

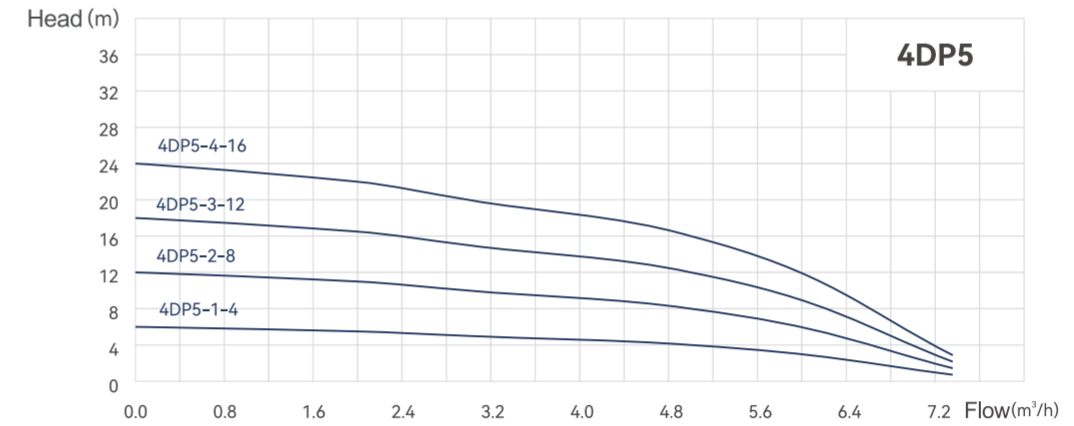
型号说明/Model description



性能参数/Performance parameters

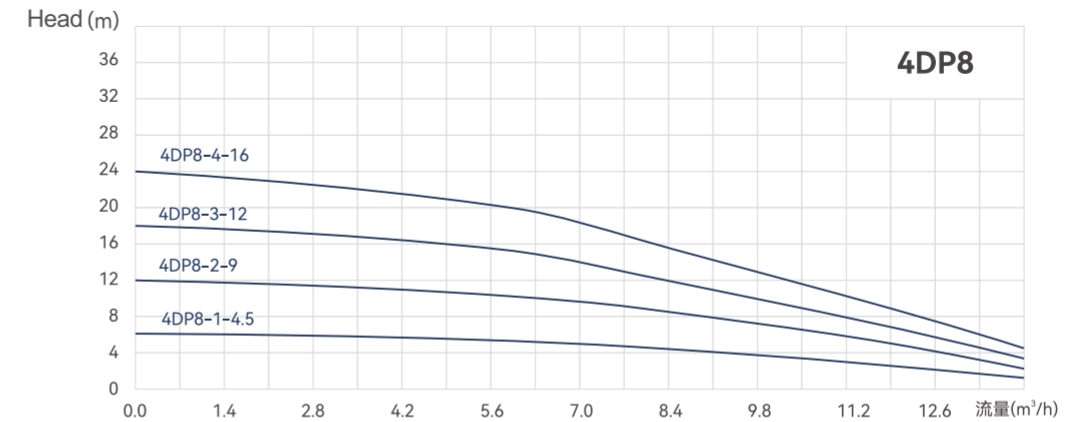
Model number	Pump assembly to distribute electric power	Rated power of motor(W)	Switching supply voltage(V)	Pump motor operating voltage(V)	Flow/Head (m³/h)/(m)	Rotational speed (r/min)
4DP5-1-4/400	350-400	200	24(21-36)	12/24	5/4	2850
4DP5-2-8/900	450-900	200	24(21-36)	12/24	5/8	2850
4DP8-1-4.5/900	450-900	200	24(21-36)	12/24	8/4.5	2850
4DP5-3-12/1200	600-1200	370	36(30-48)	12/24	5/12	2850
4DP8-2-9/1200	800-1200	370	36(30-48)	12/24	8/9	2850
4DP14-1-4/1200	800-1200	370	36(30-48)	12/24	14/4	2850
4DP5-4-16/1400	800-1400	370	36(30-48)	12/24	5/16	2850
4DP8-3-12/1600	1000-1600	550	36(30-48)	24/36	8/12	2850
4DP14-2-8/1600	1200-1600	550	36(30-48)	24/36	14/8	2850
4DP8-4-16/2500	1200-2500	750	48(42-60)	24/36	8/16	2850
6DP20-1-9/2500	1500-2500	750	48(42-60)	24/36	20/9	2850
4DP14-3-12/2500	1800-2500	1100	48(42-60)	24/36	14/12	2850
6DP20-2B-15/3000	2000-3000	1100	48(42-60)	36	20-15	2850
6DP30-1-8/3500	2000-3500	1100	48(42-60)	36	30/8	2850

Note: Some companies select low-pressure pumps by pump combination distribution power selection, please pay attention to distinguish when selecting.



性能参数/Performance parameters

Model number	Electric machine(w)	Flow (n≈2850r/min)								Outlet diameter
		m³/h	0	1	2	3	5	6	6.6	
4DP5-1-4	200	Head (m)	6	6	5.5	5	4	3	2	DN40 1 1/2"
4DP5-2-8	200		12	12	11	10	8	6	4	
4DP5-3-12	370		18	18	16.5	15	12	9	6	
4DP5-4-16	370		24	23	22	20	16	12	8	

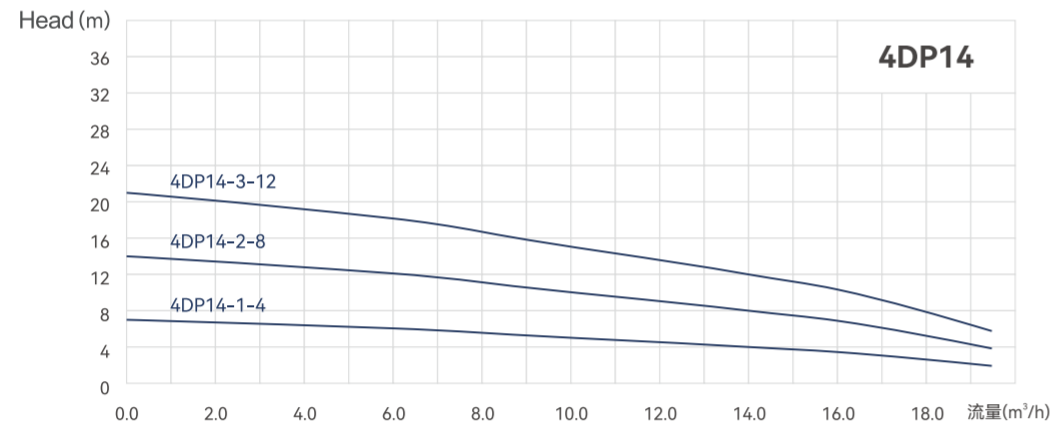


性能参数/Performance parameters

Model number	Electric machine(w)	Flow (n≈2850r/min)								Outlet diameter
		m³/h	0	2	4	6	8	10	12	
4DP8-1-4.5	200	Head (m)	6	6	5.5	5	4.5	3.5	2.5	DN50 2"
4DP8-2-9	370		12	12	11	10	9	7	5	
4DP8-3-12	550		18	18	16.5	15	12	10	7	
4DP8-4-16	750		24	23	22	20	16	13	9	

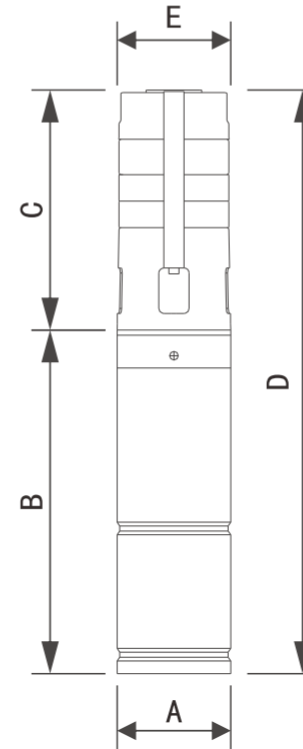
Low pressure DC fountain pump

Low pressure DC fountain pump



性能参数/Performance parameters

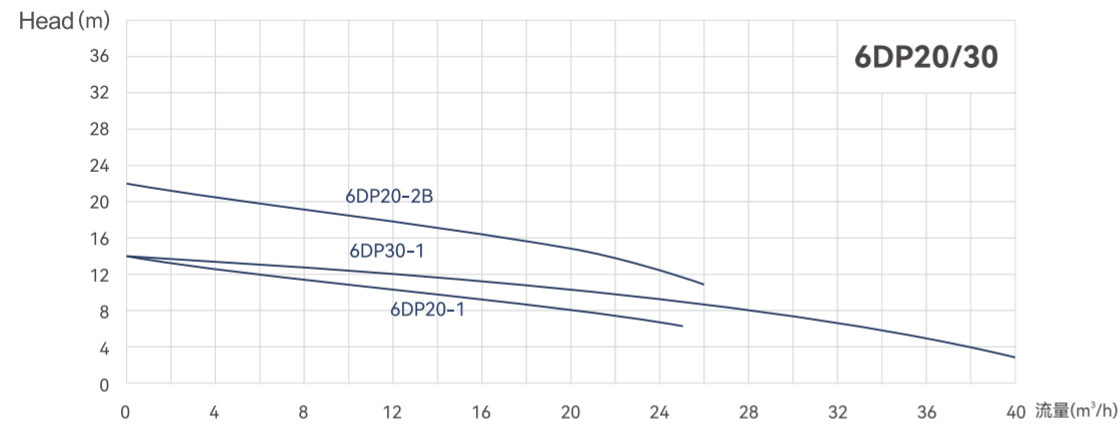
Model number	Electric machine(w)	m³/h	Flow (n≈2850r/min)							Outlet diameter
			0	6	8	10	14	16	18	
4DP14-1-4	370	7	6	5.5	5	4	3.5	3	DN50 2"	
4DP14-2-8	550	14	12	11	10	8	7	5.5		
4DP14-3-12	1100	21	18	16	15	12	10	8		



Standard model

外形尺寸/Overall dimensions

Model number	Dimension (mm)					Outlet diameter	Net weight (KG)
	A	B	C	D	E		
4DP5-1-4/400	96	250	174	424	96	DN40	6.6
4DP5-2-8/900	96	250	195	445	96	DN40	6.8
4DP8-1-4.5/900	96	250	226	476	96	DN50	7.2
4DP5-3-12/1200	96	345	216	561	96	DN40	8.4
4DP8-2-9/1200	96	345	268	613	96	DN50	9.2
4DP14-1-4/1200	96	345	250	595	96	DN50	9.0
4DP5-4-16/1400	96	345	237	582	96	DN40	8.6
4DP8-3-12/1600	96	345	310	655	96	DN50	10.6
4DP14-2-8/1600	96	345	315	660	96	DN50	10.4
4DP8-4-16/2500	96	345	352	697	96	DN50	11.2
6DP20-1-9/2500	96	345	290	635	127	DN65	11.6
4DP14-3-12/2500	96	370	380	750	96	DN50	11.9
6DP20-2B-15/3000	96	370	341	711	127	DN65	13
6DP30-1-8/3500	96	370	305	675	129	DN65	12.3



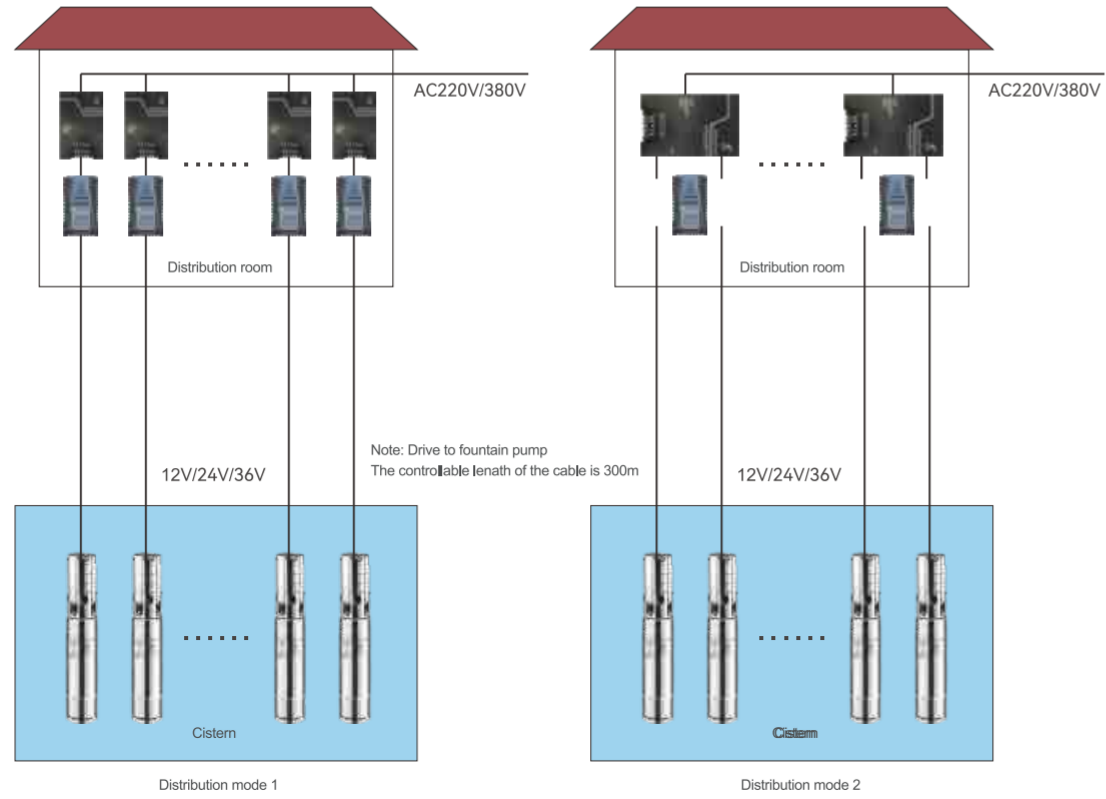
性能参数/Performance parameters

Model number	Electric machine(w)	m³/h	Flow (n≈2850r/min)								Outlet diameter
			0	5	10	15	20	25	30	35	
6DP20-1	750	13	12	11	10	9	6	/	/	/	DN65/DN80 2.5"/3"
6DP20-2B	1100	22	20	18	17	15	11	/	/	/	
6DP30-1	1100	13	12.5	12	11	10	9	8	6	3.6	

电压降为1%的电缆尺寸/Cable size

Electric current(A)	Cable cross-sectional area (mm²)	1.5	2.5	4	6	10	16	25	35	50	70	95	120	150	185	
1.4	Cable length (m)	192	318	506	752											
2.2		122	203	322	479	783										
2.3		104	173	275	409	672										
3.4		70	117	186	277	455	712									
4.2		55	91	145	215	354	556	844								
5.5		64	78	101	151	249	393	599	818							
7.85		29	47	75	112	185	291	442	601							
9.6		22	37	59	89	146	230	350	477	822	874					
13		16	27	43	65	107	168	256	349	656	641	821	983			
17.6		12	20	32	48	80	125	191	260	480	477	610	728	855	984	
18.8			18	31	46	76	120	183	248	358	452	577	687	804	923	
21.8			16	26	39	64	100	153	208	340	382	490	586	689	795	
24.8			14	22	33	55	86	132	180	287	332	427	512	604	699	
30				19	28	46	73	111	151	248	278	356	426	501	577	
34					24	40	64	97	132	208	244	313	375	441	510	
42					20	33	52	79	108	182	198	254	304	358	412	
48					28	44	67	92	149	170	220	264	312	361		

配电变流程图/flow chart:



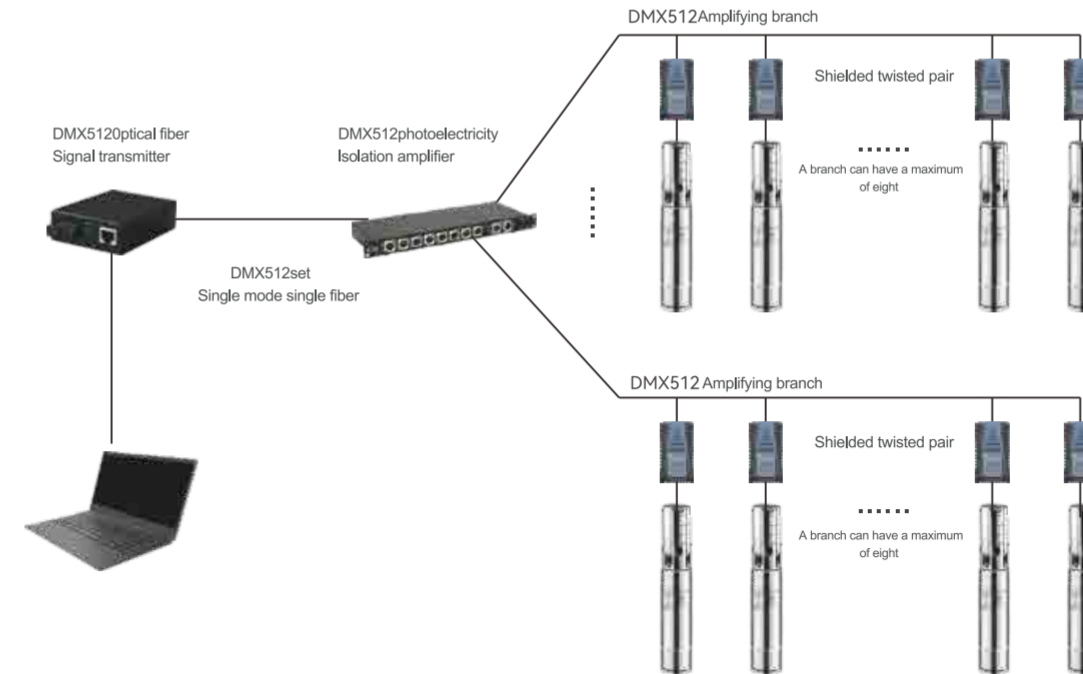
配电机房/Power distribution room

The switching power supply and driver are all installed above the cabinet in the power distribution room. The safety low-voltage wire connecting the power distribution room to the low-voltage fountain pump can reach 300 meters

配电方式/Power distribution mode

The AC220V/380V conventional power supply is converted into 12V/24V/36V low voltage power supply for low pressure fountain pump.  
Distribution mode 1. Usina a low-power switching power suoply, a switching power supply can be reaized to suoply power to a low-voltage fountain pump  
2: Using high-power switching power supply, a switching power supply can be reaized for multiple low-vltage fountain pumps.  
The actual project can use any mode or a variety of mixed modas of power distribution, according to the user needs, site conditions and project budget

DMX512控制示意图/Control Diagram:



0-10V模拟量控制示意图  
Schematic Diagram of Analog Quantity Control

